

Sonoma County / Operational Area Local Oil Spill Contingency Plan An Annex to the Emergency Operations Plan February 2011



Sonoma County Fire and Emergency Services Department
2300 County Center Drive, Suite 221A
Santa Rosa, CA 95403
707/565-1152
707/565-1172 (fax)
www.sonoma-county.org

Table of Contents

ANNEX A: INTRODUCTION	3
A.I Authority	
A.II Definitions and Acronyms	
A.III Purpose	
A.IV Geographic Boundaries	
ANNEX B: COMMAND	15
B.I Planning Organization	
B.II Response Organization	
B.III Incident Response Provisions	
ANNEX C: PLAN REVIEW	21
C.I Revision/Update Requirements	
C.II Exercises/Drills	
C.III Incident Critique and Follow-Up.....	
ANNEX D: AREA ASSESSMENTS	22
D.I Area of Responsibility.....	
D.II Area Committee Organization	
D.III Area Spill History	
D.IV Strategies	
ANNEX E SUMMARY OF AREA RESOURCES	26
E.I Equipment	
E.II Logistics	
E.III Personnel and Information Resources	
ANNEX F: HEALTH AND SAFETY	43
F.I Site Safety Plan	
F.II Respiratory Protection Plan.....	
F.III Required Safety Training.....	
ANNEX G: OPERATIONS	46
G.I List of Local Emergency Response Personnel	
G.II Volunteer Management	
G.III Wildlife.....	
ANNEX H: FINANCE	55
H.1 Spill Funding Procedures	
H.2 Documentation and Cost Recovery Procedures.....	
Figure 1 - Geographic Boundaries.....	13
Figure 2 - Unified Command Structure.....	16
Figure 3 - Notification Sequence.....	28
Figure 4 - Spill Intake Report.....	50
Figure 5 - Emergency Notification Procedures.....	51

Appendix A – Sonoma County Environmentally and Economically Sensitive Sites

Appendix B – Sonoma County Resources

Appendix C – Sonoma County Personnel and Information

Appendix D – Spill Funding Information

Appendix E – Executive Summary

Annex A: INTRODUCTION

The contents of this Local Oil Spill Contingency Plan (LOSCP) follows both the U.S. Coast Guard/U.S. Environmental Protection Agency Region IX Regional Contingency Plan (RCP) and San Francisco Bay and Delta Area Contingency Plan (ACP) as to format and relevant content.

Required Notifications

Emergency Notification List

Primary person (Key Contact Person) to initiate spill response operations:

Key Contact: Emergency Services Manager – 565-2121 (24 hrs)
565-1152

For most oil spill response efforts, Incident Command will be delegated to County Fire who will manage operations under the direction of the CAO.

Initial Notifications (in order):

Agency	Title	Day Phone	24/hr Phone
Cal EMA		800/852-7550	800/852-7550
Region 2		510/671-4908	800/852-7550
National Response Center (NRC)		800/424-8802	800/424-8802
County of Sonoma Fire and Emergency Services Department	Emergency Services Manager	707/565-1152	707/565-2121
Sonoma County Administrative Officer	CAO	707/565-2431	707/565-2121

**Other Notifications
Federal, State, and Local Organizations and Agencies Contact List**

Federal Agency	Title	Day Phone	24 hr. Phone
National Response Center (NRC)		800/424-8802	800/424-8802
USCG - Marine Safety Office/S.F. Bay		510/437-3073	510/437-3073
Environmental Protection Agency		415/974-8131	916/255-3618
U.S. Army Corps of Engineers/Sacramento		916/551-2526	
U.S. Fish and Game-OSPR		916/445-9338	
National Oceanographic and Atmospheric Administration (NOAA)		310/514-6197 or 206/343-3432	
National Weather Service	Marine Meteorologist	415/936-1212	

These agencies will be notified by the Cal Emergency Management Agency

State Agency	Title	Day Phone	24 hr. Phone
Cal EMA		800/852-7550	800/852-7550
Region 2		510/671-4908	800/852-7550
Office of Oil Spill Prevention and Response		916/324-9338	916/445-0045
Cal/OSHA	Associate Engineer	707/445-6611	800/852-7550
State Fire Marshal		707/445-6525	800/852-7550
California Water Quality Control Board			800/852-7550
Region 1 — North Coast		707/576-2220	800/852-7550
California Coastal Commission		415/904-5200	800/852-7550
State Lands Commission		213/590-5201	800/852-7550

State Agency	Title	Day Phone	24 hr. Phone
California Department of Forestry – Sacramento		707/576-2285	800/852-7550
California Department of Parks & Recreation		707/576-2185	800/548-1432
CHP – Sacramento			707/648-5550
Cal/EPA-DTSC		916/324-3773	800/852-7550
Air Quality Management District	N. Sonoma Co. APCD	707/433-5911	
	S.F. Bay Area AQMD	415/749-5000	800 852-7550
California Department of Transportation		707/762-6641	510/286-0315

These County agencies will be notified by Sonoma County Sheriff's Dispatch

County Agency	Title	Day Phone	24 hr. Phone
County Dispatch		707/565-2121	707/565-2121
County of Sonoma Fire and Emergency Services Department	Emergency Services Manager	707/565-1152	707/565-2121
County Administrative Officer	CAO	707/565-2431	707/565-2121
Public Health (Env. Health)		707/525-6565	707/565-2121
Spud Point Marina		707/875-3535	707/875-3535

The following information is also found in the:

- **County Hazardous Material Incident Response Plan, IV - Incident Notification and Figure B-1 - Notification Sequence**

A.I Authority

Senate Bill (SB) 2040, the Lempert-Keene-Seastrand Oil Spill Prevention and Response Act of 1990 (Act) was signed into law by the Governor in September 1990. Under Section 22 of the Act and pursuant to sections 8670.35 and 8670.38 - 40 of the Government Code, local governments are encouraged to prepare, update, or revise a Local Oil Spill Contingency Plan (LOSCP) as part of their existing Hazardous Materials Emergency Incident Response Area Plan (Area Plan), as required by Section 25503 of the Health and Safety Code.

Local government grant recipients are required to prepare this LOSCP element in accordance with sections 852.62.1 - 852.62.3 in Title 14 of the California Code of Regulations (CCR).

To the greatest extent possible, this LOSCP element shall be consistent with:

- 1) Area plans required pursuant to Chapter 6.95 of the Health and Safety Code commencing at section 25500;
- 2) Local Coastal Plan (LCP) as certified under section 30500 of the Public Resources Code;
- 3) Local Emergency Response Plans (LEPC) required by the National Contingency Plan as required by regulations pursuant to regulations implementing section 4201(c) of OPA 90;
- 4) Federal Area Plans (ACP) pursuant to OPA 90 and Executive Order 12777 dated 22 October 1991.

The state statute requires local governments which complete an LOSCP to certify to the Administrator every three years that a complete review of this LOSCP has been conducted. The statute further requires that any necessary revisions and substantial changes will be forwarded to the Administrator within 14 days of making such changes. The LOSCP, as part of the County's Hazardous Materials Emergency Incident Response Plan (Area Plan), shall be reviewed every three years by County Fire. Any changes or corrections shall be circulated to the distribution list in a timely fashion. Each agency is responsible for incorporating such changes into their copies and recording those changes on the "records of change page." Copies of these changes will be submitted to the Administrator within 14 days.

It is the responsibility of each agency listed in this LOSCP to submit any changes in identified personnel, titles or notification numbers to County Fire. Any changes in the agency's response policies or capabilities shall be submitted to County Fire. These changes may be submitted at any time.

Any major weakness in this LOSCP that are identified during a post incident critique or post drill critique shall be addressed and corrected during the review of the County's Hazardous Materials Incident Response Plan (Area Plan).

A.I(a) Pollution Investigation Authority

Several federal, state, and local agencies have a direct role in the enforcement of applicable laws and regulations associated with a discharge, or substantial threat of a discharge, of oil into the navigable waters of the U.S. The investigation into alleged violations of the many applicable laws and regulations requires a coordinated effort among the many agencies involved. As a preliminary step to enhance the effectiveness of investigative activities and limit the potential negative impact of these activities upon the cleanup and removal actions associated with an incident, agencies including, but not limited to, U.S. Coast Guard, Cal EMA, State Water Resources Control Board, Local enforcement authorities, and the County District Attorney have been identified as having a direct, field-oriented role in the initial stages of these events.

A.II Definitions and Acronyms

Unless otherwise specified, the use or reference to the terms Annexes, Appendices or Tabs applies to such material found within this Sonoma County Local Oil Spill Contingency Plan.

The following selected definitions are common in oil spill response and are provided for the convenience of the user.

Activation - means notification by telephone or other expeditious manner.

Administrator - means the administrator for oil spill response appointed by the Governor pursuant to Government Code Section 8670.4.

Area Contingency Plan (ACP) - for the purpose of this document, Area Contingency Plan refers to the Coast Guard Area Oil Spill Plan. Counties also maintain County Operational Area Hazardous Materials Incident Response Plan (Area Plan), often referred to as area plans. To avoid confusion in this document, the Sonoma County Operational Area Hazardous Materials Incident Response Plan is the "Area Plan".

Area Plan - Counties also maintain a County Operational Area Hazardous Materials Incident Response Plan (Area Plan), often referred to as area plans. To avoid confusion in this document, the Sonoma County Operational Area Hazardous Materials Incident Response Plan is the "Area Plan".

Barrel - for the purpose of this plan, a barrel of oil is 42 gallons.

Boom - a mechanical device used to contain and hold oil or other substances from spreading.

California Department of Forestry and Fire Protection – formerly known as CDF and now referred to as Cal Fire.

California Emergency Management Agency - formerly known as Cal OES, Office of Emergency Services now referred to as Cal EMA.

Captain of the Port - The pre-designated Federal On-Scene Coordinator for any response to a marine, or threat of a marine spill.

Coastal waters - means the waters of the coastal zone.

County of Sonoma Fire and Emergency Services Department - formerly known as DES, the Department of Emergency Services is now the County of Sonoma Fire and Emergency Services Department (County Fire). "County Fire" is the name used throughout this document.

Discharge - as defined by section 311 (a)(2) of the Clean Water Act (CWA), includes, but is not limited to, any spilling, leaking, pumping, pouring, emitting, emptying, or dumping of oil, but excludes discharges in compliance with a permit under section 402 of the CWA, discharges resulting from circumstances identified and reviewed and made a part of the public record with respect to a permit issued or modified under section 402 of the CWA, and subject to a condition in such permit, or continuous or anticipated intermittent discharges from a point source, identified in a permit or permit application under section 402 of the CWA, that are caused by events occurring within the scope of relevant operating or treatment systems. For purposes of this plan, discharge shall also mean substantial threat of discharge.

Discharge Size (as identified in the federal Area Contingency Plan):

- Most probable discharge - is based on the size of the average spill in the area. For this plan, the amount is considered to be up to 50 barrels.
- Maximum most probable discharge - is based on the largest recorded spill size for the area. For this plan, the amount is considered to be 50 - 2,500 barrels.
- Worst case discharge - is based on the case of a vessel losing its entire cargo in adverse weather conditions. For this plan, the amount is considered to be 1.2 million barrels.

Dispersants - means those chemical agents that emulsify, disperse, or solubilize oil into the water column or promote the surface spreading of oil slicks to facilitate dispersal of the oil in the water column.

Federal On Scene Coordinator (FOSC) – means the pre-designated federal official given the responsibility of directing any spill response efforts.

Fund or Trust Fund - may refer to either a federal fund or state fund. The federal fund is the Hazardous Substance Trust fund established by section 4304 of the Oil Pollution Act of 1990. The state fund means the Oil Spill Prevention and Administration Fund established by section 8670.38 of the California Government Code.

Hazardous Materials - means any material that, because of its quantity, concentration of physical or chemical characteristics, poses a significant present or potential hazard to human health and safety or to the environment if released into the workplace or the environment. This definitions includes, but is not limited to, oil as defined in the Lempert-Keene-Seastrand Oil Spill Prevention and Response Act of 1990 (Statutes of 1990, Chapter 1248).

Key Contact - identifies the key county person or office that should be notified by state or federal officials in the event of a spill. For the County of Sonoma, the Key Contact is Sonoma County Sheriff's Dispatch.

Local Government - means any chartered or general law city and/or any chartered or general law county.

Local Government On Scene Coordinator (LGOSC)- Local government official that maintains a presence in the UC with the purpose of representing more than one local government agency. This position may represent multiple Cities under multiple County jurisdictions.

Local Response Coordinator (LRC)- means the single county official with primary authority for directing and coordinating the local response operations to an oil spill. Those operations may include crowd and traffic control, emergency evacuation, beach and facility closures, fire suppression, mobilization of local equipment and personnel. The designated response coordinator shall also be the primary local government representative on any Unified Incident Command System. For the County of Sonoma, the Designated Response Coordinator is the Director of County Fire, or his or her designee.

Natural Resources - means land, fish, wildlife, biota, air, water, ground water, drinking water supplies, and other such resources belonging to, managed by, held in trust by, appertaining to, or otherwise controlled by the United States (including the resources of the exclusive economic zone defined by the Magnuson Fishery conservation and Management Act of 1976), any state or local government, any foreign government, any Indian tribe, or if such resources are subject to a trust restriction on alienation, any member of an Indian tribe.

Office of Emergency Services - formerly known as OES and now referred to as Cal EMA (Emergency Management Agency).

Oil - as defined by section 311(a)(1) of the CWA, means oil of any kind or in any form, including, but not limited to, petroleum, fowl oil, sludge, oil refuse, and oil mixed with wastes other than dredged spoil.

Responsible Party - means any of the following:

- 1) The owner or transporter of oil or a person or entity accepting responsibility for the oil.
- 2) The owner, operator, or lessee of, or person who charters by demise, any vessel or marine facility, or a person or entity accepting responsibility for the vessel or marine facility.

Acronyms

The following selected definitions are common in oil spill response and are provided for the convenience of the user. Many of these are not used in this document.

ACP - Area Contingency Plan (federal)

AG - Attorney General

ARB- Air Resources Board

ARC- American Red Cross

ATSDR- Agency for Toxic Substances and Disease Registry

BIA- Bureau of Indian Affairs

BLM- Bureau of Land Management

CA- California

CAO - County Administrative Officer

CA-OES- CA Office of Emergency Services (now Cal EMA)
Cal-EMA – CA Emergency Management Agency
Cal Fire – California Department of Forestry and Fire Protection (formerly CDF)
Cal OSHA- CA Occupational Safety and Health Administration
CALTRANS- CA Department of Transportation
CAMEO- Computer Aided Management of Emergency Operations
CAP- Civil Air Patrol
CCC- CA Conservation Corps (or CA Coastal Commission)
CCR- CA Code of Regulations
CDF- CA Department of Forestry and Fire Protection (now Cal Fire)
CDFA- CA Department of Food and Agriculture
CEC- CA Energy Commission
CEPRC- Chemical Emergency Planning and Response Commission
CERCLA- Comprehensive Emergency Response Compensation and Liability Act
CFR- Code of Federal Regulations
CHEMTREC- Chemical Transportation Emergency Center
CHP- CA Highway Patrol
CHMIRS- CA Hazardous Material Incident Reporting System
CLEMARS- CA Law Enforcement Mutual Aid Radio System
CLERS- CA Law Enforcement Radio System
CMMC - CA Marine Mammal Center
CNG- CA National Guard
COHWMP- County Hazardous Waste Management Plan
COTP- Captain of the Port
CSFM- CA State Fire Marshal
CSTI- CA Specialized Training Institute
CVC- CA Vehicle Code
CVM - Contingent Value Method
CWA- Clean Water Act

DAT - Damage Assessment Team
DFG- Department of Fish and Game
DHS- Department of Health Services
DOC- Department of Commerce
DOD- Department of Defense
DOE- Department of Energy
DOG- Division of Oil and Gas
DOI- Department of the Interior
DOJ- Department of Justice
DOL- Department of Labor
DOT- Department of Transportation
DPR- Department of Parks and Recreation
DWR- Department of Water Resources

EERU- Environmental Emergency Response Unit
EMS- Emergency Medical Services
EMSA- Emergency Medical Services Authority
EOC- Emergency Operations Center
EPA- Environmental Protection Agency
ERPG- Emergency Response Planning Guidelines
ERC - Emergency Response Coordinator

ERT- Environmental Response Team

FAA- Federal Aviation Administration

FAX- Facsimile

FCC - Federal Communications

FEMA- Federal Emergency Management Agency

FIRESCOPE- Firefighting Resources of California Organized for Potential Emergencies

FRERP- Federal Radiological Emergency Response Plan

HAZMAT - Hazardous Materials Response Team

HHS- Health and Human Services

HMICP- Hazardous Material Incident Contingency Plan

HMIS- Hazardous Material Incident Reporting System

HWSF- Hazardous Waste Strike Force

IBBRC - International Bird Rescue and Research Center

ICS- Incident Command System

JPA- Joint Powers Agreement

LEPC- Local Emergency Planning Committee

LGOSC – Local Government On Scene Coordinator

LOSCP – Local Oil Spill Contingency Plan

LRC – Local Response Coordinator

MACS- Multi-Agency Coordination System

MHFP- Multi-Hazard Functional Plan

MSO - Coast Guard Marine Safety Office

MMS- Minerals Management Service

MOU- Memorandum of Understanding

NCP - National Contingency Plan

NMFS- National Marine Fisheries Service

NOAA- National Oceanic and Atmospheric Administration

NRC- National Response Center (or Nuclear Regulatory Commission)

NRDA - Natural Resources Damage Assessment

NRT- National Response Team

NSF- National Strike Force (or National Science Foundation)

NTSB- National Transportation Safety Board

OES- Office of Emergency Services (now Cal EMA)

OPA - Oil Pollution Act of 1990

OSC- On-Scene Coordinator

OSCA - Oil Spill Cleanup Agents

OSHA- Occupational Safety and Health Administration

OSPR - Office of Oil Spill Prevention and Response

OSPRA - Oil Spill Prevention and Response Act

PIAT- Public Information Assist Team

PIO- Public Information Officer

POLREPS - Pollution Reports

PPE- Personal Protective Equipment

PUC- Public Utilities Commission

RACES- Radio Amateur Civil Emergency Services

RCP- Regional Contingency Plan

RP- Responsible Party

RPM - Remedial Project Manager

RRT- Regional Response Team

RWQCB- Regional Water Quality Control Board

SAC- State Agency Coordinator

SARA- Superfund Amendments and Re-authorization Act

SERC- State Emergency Response Commission

SIOSC- State Interagency Oil Spill Committee

SLC- State Lands Commission

SM- Scene Manager

SOA - State Operating Authority

SOC- State Operations Center

SOP- Standard Operating Procedures

SPCA - Society for the Prevention of Cruelty to Animals

SPCC- Spill Prevention Containment and Countermeasures

SSC- Scientific Support Coordinator

SWRCB- State Water Resources Control Board

TAT- Technical Assistance Team

TCM - Travel Cost Method

TSCP- Toxic Substances Control Program

UC - Unified Command

UCS - Unified Command System

USCG- United States Coast Guard

USDA- United States Department of Agriculture

USFWS- United States Fish and Wildlife Service

USGS- United States Geological Survey

VTS - Vessel Traffic Service

WTA - Willingness to Accept Compensation

WTP - Willingness to Pay

A.III Purpose

The purpose of the Local Oil Spill Response Contingency Plan (LOSCP) is to provide policy and procedures for the following:

1) Coordinated Response - The purpose of this LOSCP is to provide for a coordinated local role within Federal and State response structure for a discharge or threat of a discharge of a petroleum product from a vessel or onshore facility which will impact the coastal or bay environments of Sonoma County.

- 2) Key County Roles - Key County personnel and their roles are identified. This LOSCP identifies the Key Contact to be notified in the event or pending threat of an oil spill. This LOSCP also identifies the Local Government On Scene Coordinator who will represent the local government in the Unified Command.
- 3) Notification - This LOSCP outlines the federal, state and local notification requirements. Notification procedures are detailed.
- 4) Natural and Economic Resources - This LOSCP identifies the areas of significant and sensitive natural resources of the county. The economic resources, often dependent on the natural resources, are also identified. The response priority for the protection of these resources is reviewed.
- 5) Response Resources - This LOSCP also identifies local resources, both public and private, within Sonoma County which may be available to augment federal, state and private spill response efforts. Provisions for access and compensation of these resources are identified in this LOSCP.
- 6) Logistics - Logistical information such as communication, access, hazards and training are also identified in this LOSCP.

A.IV Geographic Boundaries

This plan covers the roles and response efforts for petroleum spills affecting the marine waters or marine influenced waters of Sonoma County. The geographic boundaries of this plan (Figure 1) are:

Ocean (Coastal) Boundaries

This plan covers the marine waters from the Sonoma-Mendocino County border at the Gualala River to the Sonoma-Marin County border at the Estero Americano.

Bay front Boundaries

Sonoma County bay front lands cover San Pablo Bay from the Marin-Sonoma County line at the Petaluma River to the Sonoma-Napa-Solano County line at Sonoma Creek. Highway 37 serves as the inland border for the bay boundary.

Area Contingency Plan Boundaries

Sonoma County falls within the SF Bay planning area of the federal Area Contingency Plan (ACP). This zone includes the coastal counties from Sonoma to San Mateo and the inland counties on the delta.

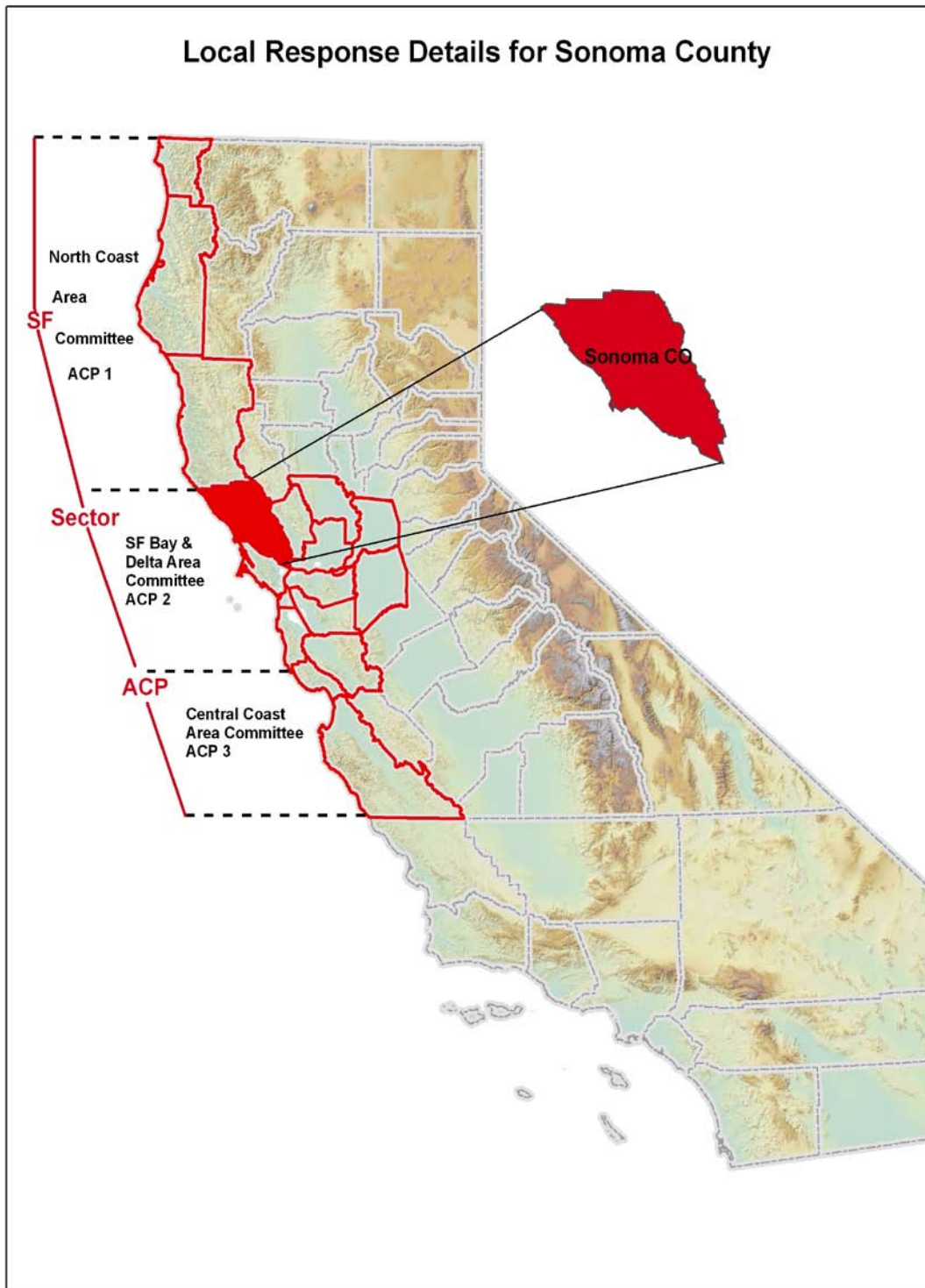


Figure 1

A.IV(a) OSC Area of Responsibility

Sector San Francisco's Captain of the Port (COTP) Area of Responsibility (AOR) is specified in 33 CFR 3.55-20 and comprises the land masses and waters of California

north of San Luis Obispo, Kern and San Bernardino Counties; Utah, except for Washington, Kane, San Juan, and Garfield Counties; and Nevada except for Clark County. Under the Oil Pollution Act of 1990, Federal removal authority was extended to include the waters of the exclusive economic zone established by Presidential Proclamation Number 5030 dated March 10, 1983.

Reference: San Francisco Bay and Delta Area Contingency Plan

http://www.dfg.ca.gov/ospr/san_francisco_plan.aspx

Sector San Francisco COTP Area of Responsibility has been further divided into three planning segments as promulgated by the OPA-90 Area Contingency Plans.

The San Francisco Bay and Delta Area extends from the Mendocino County/Sonoma County line south to the San Mateo County/Santa Cruz County line and includes all counties on San Francisco Bay and its tributaries. These counties include: Sonoma, San Francisco, Marin, Napa, Contra Costa, Alameda, Santa Clara, San Mateo, Yolo, San Joaquin, Solano and Sacramento.

Reference: San Francisco Bay and Delta Area Contingency Plan

http://www.dfg.ca.gov/ospr/san_francisco_plan.aspx

Annex B: COMMAND

B.I Planning Organization

40 CFR 300.5 defines Area Committees, as provided for by CWA sections 311(a)(18) and (j)(4), as the entity appointed by the President consisting of members from qualified personnel of federal, state, and local agencies with responsibilities that include preparing an area contingency plan for an area designated by the President. See Section B.I(c) below for additional information.

B.I(a) National Response Team

Please refer to the following link:

<http://www.nrc.uscg.mil/nrsinfo.html>

B.I(b) Regional Response Team

Please refer to Appendices I, RRT A in the following link:

http://www.dfg.ca.gov/ospr/response/acp/marine/2005RCP/rcp_2005_index.html

B.I(c) Area Committee

40 CFR 300.5 defines Area Committees, as provided for by CWA sections 311(a)(18) and (j)(4), as the entity appointed by the President consisting of members from qualified personnel of federal, state, and local agencies with responsibilities that include preparing an area contingency plan for an area designated by the President.

Three Area Committees, including the North Coast, San Francisco Bay and Delta and Central Coast Area Committees, coordinate the San Francisco Sector Area Contingency Plan.

The North Coast Area Committee is co chaired by Federal On Scene Coordinator (FOSC) San Francisco and the California Department of Fish and Game OSPR Local Warden (as directed by the Administrator of OSPR).

The San Francisco Area Committee is co chaired by FOSC San Francisco and the California Department of Fish and Game OSPR Local Warden (as directed by the Administrator of OSPR).

The Central Coast Area Committee is co chaired by FOSC San Francisco and the California Department of Fish and Game OSPR Local Warden (as directed by the Administrator of OSPR).

See section 1005 of the Region 9 Contingency Plan for additional information.

B.II Response Organization

Should a spill occur in or near the San Francisco Bay, the FOSC shall evaluate the nature and severity of the spill, jurisdictions that may be affected, potential for public involvement, and the need for local agency support. The FOSC may exercise the option to appoint a Local Government On Scene Coordinator (LGOSC) as a member in the Unified Command (see Figure 2). Local governments may request appointment of a LGOSC via the State On-Scene Coordinator (SOSC) utilizing the coordination procedures outlined under the Standardized Emergency Management System (SEMS) and the San Francisco Bay Area Regional Emergency Coordination Plan (RECP).

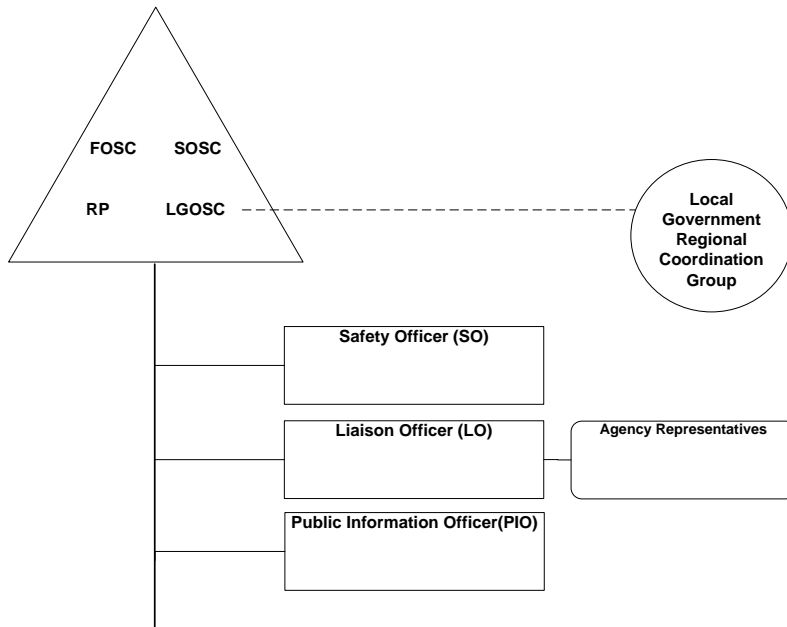


Figure 2 – Local Government On Scene Coordinator as member of UC

In the event of a major oil spill along the Sonoma County coast or bay front area, the cities of Sonoma County will respond as independent agencies under the coordination of County Fire. The County Administrator or his designee is the LRC and will represent all city and county agencies of Sonoma County within the Unified Command of state and federal authorities.

In the event of a marine spill of lesser magnitude, where the incident response does not require the activation of the USCG/OSPR Unified Command, the city or, in unincorporated areas, the county, most affected by the spill may act as the lead agency. For any significant marine release, however, the Incident Commander must immediately notify County Fire.

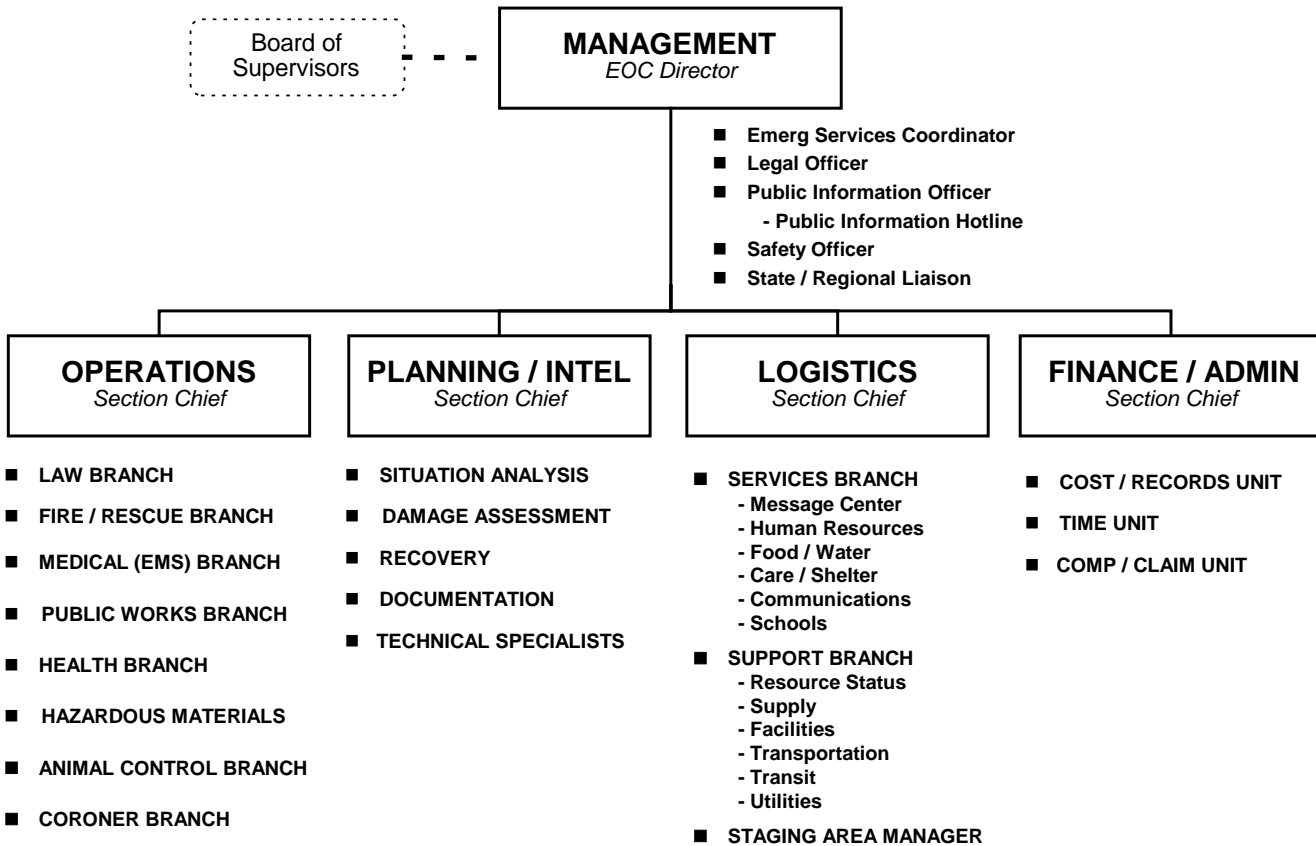
B.II(a) Local Incident Command System

Sonoma County Emergency Management and Response System

The Sonoma County Local Emergency Management Organization serves two purposes: (1) coordination and direction of countywide response and recovery operations, and (2) support for response and recovery operations of the incorporated cities within the county.

The county emergency management organization is headed by the County Administrator (CAO) who serves as Director of County of Sonoma Fire and Emergency Services Department, under the direction of the Sonoma County Operational Area Emergency Council. He or she is supported by a staff comprised of the County Emergency Services Manager, and functional Operations Coordinators assigned primary and support duties in the County of Sonoma Emergency Management Organization chart.

County of Sonoma Emergency Organization



Sonoma County utilizes the Incident Emergency Management System (IEMS) patterned after the Incident Command System (ICS). Under this system, the CAO is responsible for the overall management of the incident and coordination of the County's response and county departments have specific functions as shown in County of Sonoma Emergency Organization Chart.

The County also utilizes the Standardized Emergency Management System (SEMS) as an emergency management tool. A complete description of SEMS can be found in the Sonoma County/Operational Area Emergency Operations Plan (Op Area Plan).

B.II(b) Emergency Personnel Roles, Authorities and Responsibilities

In an emergency, the following command relationships will apply:

Director of County Fire /Incident Commander/ Local Response Coordinator - By ordinance, the County Administrator (CAO) is designated as the Director of County Fire. The CAO manages the county's response. For most oil spill response efforts,

the local response coordinator will be delegated to County Fire who will manage operations under the direction of the CAO.

EOC Manager - County Emergency Services Manager or designated alternate shall be the local EOC Manager. Responsibilities will include the management and supervision of the administrative functions of the primary/alternate EOC, as opposed to the direct supervision of the various primary/alternate EOC liaisons/operational coordinators. This individual is responsible for maintaining the operational readiness of the primary and alternate EOCs.

On-Scene Management - Generally, on-scene management is provided by the Sonoma County Sheriff's Office, County Fire or the local Fire Chief depending on the nature of the incident.

Section Chiefs - Generally, Section Chiefs and support staff are provided by the appropriate county department.

B.II(c) Local Response Coordinator

By ordinance, the County Administrator (CAO) is designated as Director of the County Fire. The CAO manages the county's response. For most oil spill response efforts, Incident Command will be delegated to County Fire who will manage operations under the direction of the CAO. The Local Response Coordinator is the Emergency Services Manager, County Fire.

B.III Incident Response Provisions

B.III(a) Specific ICS Language in this LOSCP

SEMS intended to standardize response to emergencies involving multiple jurisdictions or multiple agencies. SEMS is intended to be flexible and adaptable to the needs of all emergency responders in California. SEMS requires emergency response agencies to use basic principles and components of emergency management including ICS and mutual aid systems. The law directed State Emergency Management, in coordination with other state and local government agencies to establish, implement and maintain the SEMS by December 1, 1996, in order to be eligible for state funding of response-related personnel costs pursuant to activities identified in California Code of Regulations, Title 19, §2920, §2925, and §2930.

SEMS is applicable to the following five levels:

- ◆ Field (On scene at incidents)
- ◆ Local Government (includes Special Districts)
- ◆ Operational Area (Sonoma County)
- ◆ Region (Coastal Region OES)
- ◆ State

The basic framework of SEMS incorporates five major elements:

- ◆ The Incident Command System (ICS)
- ◆ Multi-agency or inter-agency coordination
- ◆ The State's Mutual Aid Program
- ◆ Operational Areas
- ◆ The Operational Area Satellite Information System (OASIS)

The Operational Area as defined in the California Emergency Services Act (California Government Code, §8550 et seq.) designates an intermediate level of organization, cooperation, and planning between public entities within County boundaries. The county, cities, special districts, and other public benefit non-profit corporations that are parties to this Agreement shall participate in this organizational structure which is a partnership for a systematic approach for exchanging disaster intelligence, mutual aid requests, and resource requests in emergencies and also to provide emergency preparedness on a day-to-day basis through cooperative training and exercise activities. The Sonoma County Emergency Services Manager is the designated Operational Area Coordinator. Sonoma County participates in the California Master Mutual Aid Agreement.

B.III(b) Provisions To Integrate Local ICS with State ICS

The Administrator, in consultation with other state agencies and the local government representative, has the lead state authority and responsibility for overseeing oil spill response and clean up activities in marine waters, identification of natural resources, protection priorities, and damage assessment after an oil spill.

In the event of an oil spill in marine waters, the OSPR shall conduct an initial on-scene assessment of the spill and review the measures being taken by the responsible party and determine the appropriate level of response.

The State On-Scene Coordinator, in consultation with the local government representative, and if applicable, through joint conference with the Federal On-Scene Coordinator, shall determine the nature of the local government support needed, and how local government resources identified in the local oil spill contingency plan element may be employed most effectively. If local government assistance is determined to be needed, the State On-Scene Coordinator, through the Unified Command, shall coordinate with the local government representative identified in the local oil spill contingency plan element in order to obtain such local assistance."

B.III(c) Pre-Emergency Planning and Coordination Amongst Response Personnel

See Appendix E of the Sonoma County Operational Area Hazardous Materials Incident Response Plan for a full description of roles and responsibilities for all positions identified in the Incident Command System.

Any commitment of resources shall be made through the Local Response Coordinator.

The Division of Emergency Management in County Fire is the lead agency for the Sonoma Operational Area. The Sonoma Operational Area consists of nine incorporated cities (Cloverdale, Cotati, Healdsburg, Petaluma, Rohnert Park, Santa Rosa, Sebastopol, Sonoma, and the Town of Windsor), Sonoma State University, the Sonoma County Junior College District, and other special districts within the county's geographical boundary. Under the State of California's Standardized Emergency Management System (SEMS), the Operational Area is the primary level of coordination for response and recovery activities following an emergency or disaster. SEMS is a management system that provides an organizational framework and guidance for operations at each level of the state's emergency management system. It provides the umbrella under which all response agencies may function in an integrated fashion.

Annex C: PLAN REVIEW

C.I Revision/Update Requirements

OPA 90 requires that the federal Area Plans be reviewed and updated annually through 1997. After 1997, this LOSCP will be updated every 5 years.

All revisions and corrections to the Sonoma County Plan shall be forwarded to this LOSCP at the Coast Guard Marine Safety Office, SF Bay for incorporation into the Area Plan.

C.II Exercises/Drills

To ensure a coordinated response, the County will:

- 1) Continue to participate in the Federal Area Committee Process
- 2) Review the Oil Spill Response Plan every five years
- 3) Participate in further OSPR programs for local governments
- 4) Participate in any drills or exercises

C.II(a) County Participation in Drills

Exercises and drills are the most effective tool for evaluating the procedures identified in contingency plan. Both state and federal regulations require operators of facilities and vessels to perform numerous drills to test their response plans. In addition, the Coast Guard and numerous state agencies hold both planned exercises and surprise drills.

Sonoma County shall participate in both planned exercises and surprise drills which affects or threatens Sonoma County shorelines. The primary contact person for Sonoma County's participation shall be the Director of County Fire at 707/565-1152. The Director should be contacted in advance by any private or public agency conducting drills. The County prefers to have the opportunity to participate in both the design and conduct of such drills. The actual level of county participation will be based on the nature of the drill and the available county resources. The County's role may be

as small as to be limited to that of an observer. It may also be as large as to consist of full participation in all of the steps identified below.

If the county learns before the post exercise/drill critique that it was not notified or included in an exercise or drill which affected or threatened Sonoma County, the County shall participate in the post exercise/drill critique to ensure that the County's interest are represented. If the county learns after the post exercise/drill critique that it was not notified or included in an exercise or drill which affected Sonoma County, the County shall request a written response from both the U.S. Coast Guard and the Office of Oil Spill Prevention as to why the County was not notified or included in the exercise.

C.II(b) Goals of Drills

It is the goal of Sonoma County to drill or exercise the following:

- Notifications procedures
- Coordinated communication and mutual aid procedures
- Unified Command
- Claims procedures
- Public information strategies
- Coordinated investigation and enforcement procedures
- Specific booming strategies which have been developed by consultants and the Coast Guard

C.III Incident Critique and Follow-Up

A Post Incident Critique shall be conducted on all incidents wherein a review of response and clean-up activities is requested by (1) the incident commander; (2) a responding agency; or (3) required by law. These critiques shall be conducted by County Fire within seven (7) days of the termination of the incident and shall include an interagency meeting to evaluate the response, to improve future response, and to determine if any elements of this plan require revision.

County Fire shall be the repository for all hazardous materials incident reports that occur within its jurisdiction for statistical and historical data purposes.

A copy of any report involving a hazardous materials incident should go to the District Attorney, Environmental and Consumer Law Division.

Annex D: AREA ASSESSMENTS

D.I Area of Responsibility

See section A.IV(a)

D.I(a) Sector San Francisco

See section A.IV(a)

D.I(b) Sonoma County

The purpose of this section is to describe the USCG/EPA boundaries for Sonoma County. Figure 1 shows the Sonoma County boundary that might be impacted by a release of oil to San Francisco Bay or the Pacific coastline.

D.II Area Committee Organization

See Section B.I(c)

D.II(a) Area Committee Charter Members

See Section B.I(c)

D.III Area Spill History

For a summary of the San Francisco Bay area spill history, refer to Section 9420.0 of the San Francisco Area Contingency Plan.

D.IV Strategies

D.IV(a) Ranking of Resources

State and federal law establish three priority levels for oil spill response:

First Priority -	Protection of human health and safety
Second Priority -	Protection of environmental resources
Third Priority -	Protection of economic resources

Those resources with the highest (first) priority, for the protection of human health and safety, include resources and sites such as:

- power plant intakes
- desalinization plant intakes
- drinking water intakes
- other health/safety intakes (i.e. fire dept.)
- residential or public use areas (i.e. schools) threatened by toxic vapors from a spill

D.IV(b) Environmentally Significant Sites

Appendix A, Environmentally Sensitive Sites, provides information on some of Sonoma County's more sensitive environmental resource sites. These sites are designated as the second priority for oil spill response. Sonoma County's environmental resources are ranked on a basis of A, B & C. Sites ranked 'A' are most susceptible to long term damage from an oil spill. Sites ranked 'C' have the lowest potential for long term damage. However, all shorelines have resources sensitive to oiling.

For additional information, see the Area Contingency Plan, Volume 2, Section 9841, San Francisco Bay and Delta Geographic Response Area 1, Sonoma and Northern Marin Coast – Environmental Sensitive Sites for a complete description.

D.IV(c) Economically Significant Sites

Appendix A, Economic Sites, identifies Sonoma County's economically sensitive sites. It continues the ranking system established for environmental resource sites, by ranking economic resources on a basis of 'D', 'E' & 'F'. Note that all economic sites are ranked at a lower classification than environmental sites.

Explanation of Economically Significant Summary Chart

Appendix A – Economic Sites identifies Sonoma County's economically significant sites, from north to south, beginning at the Mendocino-Sonoma county border. This appendix provides the following information for each site:

Line No. - A site number that corresponds to the ACP map (those without line numbers have not been mapped)

Site Name - Name of facility

Site Description – Ownership of the facility

Economic Sensitivity Rating - The economic priority ranking of D, E, or F

Site Function – Major uses at the site

Site Address – Specific address, if available

For additional information on these sites, refer to the Area Contingency Plan, Volume 2, Section 9841.3, SF Bay and Delta GRA1, Sonoma and Northern Marin Coast, Economic Sites.

The following explain the criteria for ranking economic sites as either 'D', 'E', or 'F'.

D = Economic activities and resources which require high water quality for their operations or existence. This classification also applies to historical, cultural and archaeological sites. Resources in this category face severe, long term economic impacts from a spill. This category includes commercial fishing areas, aquaculture and mariculture sites, marine labs, salt pond intakes, aquarium water intakes, etc.

E = Facilities, businesses or resources which directly use coastal or bay waters within their economic activity and which are at risk of oiling from a spill in marine waters. The resources falling into this category would face significant disruption of their activity, but shorter term potential damages from oiling than resources in the "D" category. This category would include resources such as marinas, harbors, commercial piers, industrial intakes, and parks or recreational areas. (Note - Those sites which also have environmental sensitivity rankings will receive priority appropriate to their environmental rank).

F = This category contains waterfront facilities, businesses and resources, but do not depend directly on water related activities for their economic base. These resources would face economic impacts from a marine spill but not as significant as those identified in category E. This category includes resources such as waterfront hotels, restaurants, shops and residential areas. (Note - These sites could be evacuated in a major spill to avoid health risk).

Using the above criteria, State OSPR and U.S. Coast Guard recommend the following ranking for the following economic facilities:

Marine Dependent Businesses, Facilities or Resources

- aquaculture, mariculture (D)
- commercial fishing grounds/areas (D)
- marinas, houseboat areas, liveaboards (E)
- boat moorings (E)
- ferries, tour boats (E)
- port or harbor facilities (E)
- cargo piers, terminals, fishing piers (E)
- ship or boat repair shops (E)
- facility intakes not associated with public health (i.e. aquariums, marine labs, industry intakes) (D)

Waterfront Facilities/Business Areas

- significant tourist, hotel, restaurant areas (F)
- waterfront residential areas (F)

Locally Significant Areas

- historical, archaeological, cultural sites (D)
- parks, beaches, recreational areas (E)
- vessel or boat traffic areas - shipping lanes, harbor entrances, river mouths, bays, anchorages (E)

Many of the sites along the Sonoma County coast contain both environmental and economic resources. For those sites, the environmental ranking has precedence. Therefore these sites should receive response attention appropriate to their environmental ranking.

D.IV(d) Archaeological Sites and Offshore Fisheries

The above information applies to those shorefront economic sites which are easy to map. Two additional categories cannot be easily mapped. These two categories are archaeological sites and offshore fisheries.

D.IV(d)(1) Archaeology

Almost the entire coastal region of Sonoma County contains some evidence of archaeological sites. To protect these sites from theft and vandalism, they are not mapped in this document. During any response and cleanup effort, specific identification of these sites will be necessary to insure that they are not disturbed by response equipment or personnel. Special care should be taken to prevent the locating of command centers on these sites or disturbance by heavy equipment. The following individuals and organizations can assist in identifying these sites for response personnel. These include:

Native American Heritage Commission (Sacramento) 916/653-4082
Northwest Information Center - Sonoma State University 707/664-2494
Office of Historic Preservation (Sacramento) 916/653-9125

Other Native American contacts include:

Coast Miwok: Chairman, Federated Coast Miwok 310/825-4173

Pomo/Coast Miwok - Marin /Southern Sonoma 510/938-6323 or 707/528-2584

D.IV(d)(2) Offshore Fisheries

Sonoma County's offshore waters contain very productive fishery ecosystems. They provide substantial economic benefits as a site for commercial and sport fisheries.

Commercial fisheries provide substantial income to local residents and related businesses. Recreational fisheries also provide substantial revenue to local tourism and recreational industries, including restaurants, lodging facilities and suppliers.

Annex E SUMMARY OF AREA RESOURCES

E.I Equipment

E.I(a) Emergency Response Equipment Inventory, Location, and Contact Agency to Deploy Equipment

Refer to Appendix B for a partial listing.

E.I(b) Procedures to Ensure the Commitment of Oil Spill Response Resources

Under the terms of the resolutions, found in the Sonoma County/Operational Area Emergency Operations Plan, the County has established mutual aid agreements with agencies within our operational area in the event of a major catastrophe. Any requests shall be made through the Sonoma County Local Response Coordinator or their designee. The Logistics Section of the Emergency Operations Center will process the request. This process is described in detail in the Sonoma County/Operational Area Emergency Operations Plan.

E.I(c) Equipment Sources

During a medium or large spill, additional supplies and services will be required. Numerous agencies maintain computerized listings for these supplies and services.

County Fire - 707/565-1152 or 707/565-2121 (24-hr)

County Fire maintains a listing of both public and private sources of equipment, supplies, services and personnel.

Mutual Aid - Any Mutual Aid requests shall be made by the Sonoma County Local Response Coordinator or their designee after consultation with the State Incident Commander. This process is described in detail in the Sonoma County/Operational Area Emergency Operations Plan.

Cal Fire

Dispatch Center - 707/963-4112

OSPR has an MOU with CAL FIRE to provide communication support, supplies and other logistical support. Equipment and services for Sonoma County is released by the dispatch center for the Sonoma Lake Napa unit. Request for these services can be made by either the Cal EMA or County Fire.

Besides CAL FIRE owned equipment, CAL FIRE maintains a computerized listing of private sources for equipment, supplies or services, known as the Emergency Resource Directory. On a regular basis, CAL FIRE circulates a standard rate structure for equipment which is pre-agreed to by equipment suppliers (similar to the Basic Ordering Agreement). Additionally, CAL FIRE has standard operating procedures for checking in and inspecting equipment before it can be used for the incident.

CAL FIRE also maintains a list of staging areas.

CAL FIRE will need reimbursement for its services. Reimbursement procedures are outlined in the CAL FIRE/DFG MOU dated 7/07.

Caltrans

Caltrans, a state agency, can provide some heavy equipment, dump trucks and traffic control signs.

District 4 Headquarters

Oakland (staffed 24/7) 510/286-6359 Northbay Region

The following offices are staffed Monday-Friday during normal business hours:

Petaluma - 611 Payran 707/762-6641

Sebastopol – 5611 Sebastopol Rd. 707/823-3156

Santa Rosa – 224 Lincoln 707/546-0644

Geyserville – 21979 Geyserville Ave. 707/857-3540

Coastal Maintenance Stations

Fort Ross- 21265 Hwy 1 707/847-3239

E.II Logistics

E.II(a) Coordinated Communications Procedures

Note: This section addresses provisions for coordinated communications during operations. Notification and Call-out Procedures are described in Figure 3, below.

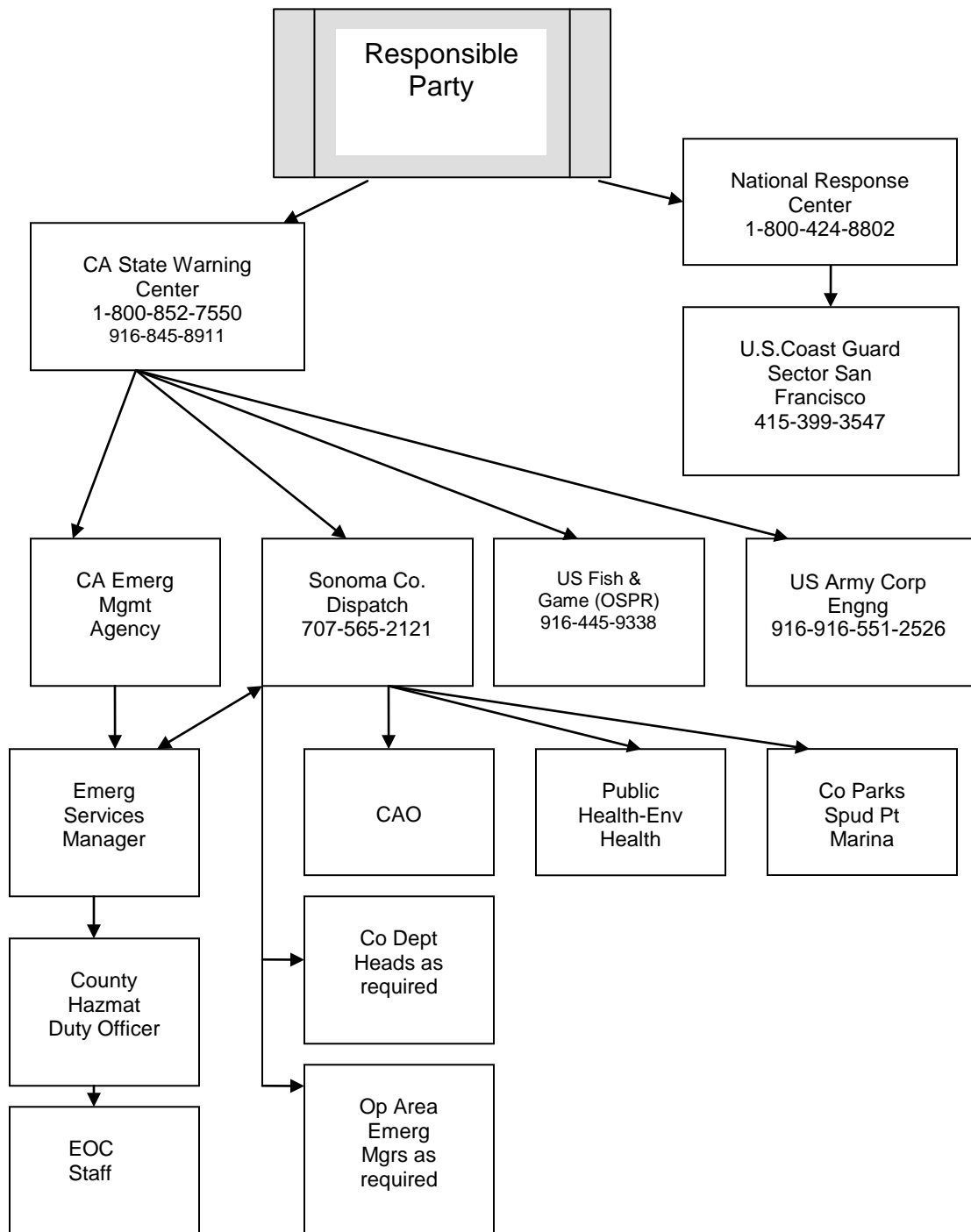


Figure 3

Sonoma County Policy

Since few uncommitted communications resources exist, Sonoma County will be unable to provide state or federal agencies and responders with an adequate long-term supply of radio communication equipment or frequencies. Available county equipment and frequencies are already earmarked for use by the jurisdiction possessing it and are not readily available for diversion to other jurisdictions. Even if available, it is usually not practical for use by other jurisdictions due to frequency or antenna incompatibility.

Specific information on frequencies and equipment may be found in the Sonoma County Tactical Interoperability Communications (TIC-P).

Short Term Radio Resources

Short term radio resources available through Sonoma County include the Auxiliary Communications Service (ACS) and the Sheriff's Office's Mobile Command Post, satellite truck, dispatch bureau.

Auxiliary Communications Service (ACS) can provide initial, short-term radio resources utilizing the ham radio system. ACS is a group of volunteers registered with the county to provide communications support during a major incident. They are activated at the request of County Fire, once an Emergency has been declared by the Supervisors. ACS operators bring their own equipment (in many cases, this includes a power source) to the scene which allows them to communicate to the ACS operator at another location. They "shadow" response personnel for the purposes of relaying their radio communications between agencies with incompatible equipment or when normal communication systems are inoperable.

Radio Resources Available from Private Sector

Both County Fire and Cal Fire maintain computerized listings of business able to supply communication equipment.

On-scene Inter-agency Coordination Frequencies

Please refer to the TIC-P for local frequencies. All local dispatch centers, police and fire agencies have copies of the TIC-P.

Federal, state and local agencies will use their assigned frequencies for their intra-agency communication. In a large spill, agencies responding to the spill shall notify the communications section of their working frequency. In a small spill, Sonoma County Sheriff's Dispatch shall maintain a list of the frequencies being used by responders.

During a large spill, it is anticipated that additional tactical frequencies will be necessary. These shall be designated at the time of the spill.

E.II(b) Locations for Communications Systems and Operations Center

There are no buildings in coastal Sonoma County which would easily be converted into a Command Center. Even the hotel facilities in Gualala or Bodega Bay may prove too small or present other logistical problems. There are no CDF pre-identified sites for command centers or staging areas in the coastal zone of Sonoma County.

Command Center

Sonoma County will utilize the County Emergency Operations Center as their local Command Center. This is located in the Hall of Justice in the County Administrative Center.

Alternative Command Centers:

Sebastopol

Sebastopol Community Center
390 Morris St

Sebastopol Veterans Memorial Building
282 S High St

Guerneville

Veterans Memorial Building
1st and Church Sts

Bodega Bay

There are no public facilities which could serve as Command Centers. The facility at Spud Point does not have adequate office space. If deemed necessary, a temporary Command Center could be set up at either Westside County Park or Doran County Park.

Cal Fire

Cal Fire can provide command center facilities. OSPR has an MOU with Cal Fire to provide communication support, commissary and other logistical support. Equipment and services for Sonoma County is released by the dispatch center for Sonoma-Lake-Napa Unit. Request for these services can be made by either Cal EMA or County Fire.

Cal Fire contact - 707/963-4112

Other possible command centers

There are three hotels in Bodega Bay which could be converted into command centers. There may be scheduling conflicts.

Bodega Bay Lodge 103 Hwy 1 Bodega Bay CA 94923 707/875-3525 808/875-2250 707/875-2428 fax	84 hotel rooms restaurant on site 4 meeting rooms - capacity 15-90 phone lines available undetermined Wireless internet property-wide
--	---

Bodega Coast Inn 521 Hwy 1 Bodega Bay CA 94923 707/875-2217 800/346-6999 707/875-2964 fax	45 rooms restaurant on site 2 meeting rooms –capacity 35-85 phone lines available undetermined wireless internet
--	--

Inn at the Tides
 800 Hwy 1, P. O. Box 640
 Bodega Bay CA 94923
 707/875-2751
 800/541-7788
 707/875-2669 fax

86 rooms
 restaurant on site
 6 meeting rooms 10 to 150 people
 120 phone lines to hotel, most of trunk
 phone lines are in use
 wireless internet

Mobile Command Post Facilities

Sheriff's Office

The Sheriff's Office maintains a mobile communications/ops center trailer. The 42' trailer can be towed to a site, has AC/DC capabilities and can accommodate 3 radio operators plus 3 command staff. Equipment capability includes packet radio for sending data for hard copy, transmit and receive for all county frequencies, transmit and receive for all RACES licensed frequencies and monitoring of state, marine and air frequencies.

The Sheriff's Office has a command center used primarily for Search and Rescue Activities. Equipment dedicated to search and rescue operations are normally not used for response.

E.II(c) Firefighting Capabilities

There are limited marine firefighting resources available in Sonoma County.

See Appendix C.2 for a partial listing of local resources. See Sonoma County Operational Area Hazardous Materials Incident Response Plan, Appendix I, Emergency Telephone Numbers, for complete listing of Fire Fighting resources.

E.II(d) Potential Staging Areas Sites for Response Equipment

NOTE: There are no formal agreements for use of any of the non-county sites identified below as possible command or staging sites.

Marshalling Areas

Sonoma County designates the following locations as Marshalling Areas:

- Sonoma County Airport (Sonoma County jurisdiction)
- Petaluma Marin Fairgrounds (Petaluma jurisdiction)
- Coast Guard Facilities at Two Rock (Coast Guard jurisdiction)
- Pacific Strike Team facilities at Novato (Coast Guard jurisdiction)

Incoming equipment that is not already directed to a specific site shall be directed to this location until a destination can be assigned.

Primary Staging Area

For a summary listing of these staging areas, see Appendix B.9 – Sonoma County Resources -Staging

Spud Point Marina/Westside County Park has been designated as the primary site for staging and response operations. Note: Storage and staging of equipment should be first located at the Westside Boat Launch and overflow at Westside campground and south parking lot at Spud Point. If possible, operations should not interfere with facilities (i.e. showers & parking) available for permanent Spud Point berth holders.

Spud Point Marina and Westside County Park are operated by the County of Sonoma.

Marina Supervisor	707/875-3535
Westside Park/Doran Park	707/875-3540
County Park Administration	707/565-2041
Sheriff's Dispatch	707/565-2121

The marina is staffed and dispenses fuel and ice 24 hours. Spud Point Marina has significant support facilities and Westside County Park has a boat launch and large paved areas.

Docks

Spud Point has 2 docks (the fuel dock and the mobile dock) which could be used for loading equipment and offloading skimmers/barges. (All boats/barges should be cleaned before entering harbor.) The docks can accommodate boats 80' long and 60' wide. The fuel dock has 2 small hoists with 1 and 3 ton capacity. The fuel dock has a weight limit of 20 tons. Note: If possible, operations should not interfere with fuel dock operations.

Channel Depth

The Army Core of Engineers maintained channel depth ranges from 12' to 17' depending on the tide.

Boat Launch

There is a concrete boat ramp at Westside Regional Park.

Berths

The number of available berths is dependent on the season. The berthing needs of all response vessels, up to 80 feet, could be accommodated.

Staging Areas

The southern paved parking lot could be used for staging area and for helicopter landings. It has no overhead power lines but has light stands. It is not fenced.

Office Space

There is insufficient office space and phone service available through the marina facility. The Marina's 3 line phone service is dependent on the electricity. However, there are 2 public phone booths on property which are not tied to the electricity.

Training

Several of the staff have received hazmat training. The Marina Supervisor is aware that if Spud Point was ever used for a response effort, the supervisor would not participate directly in the operations. The Supervisor's role would be to answer questions, organize, coordinate and advise on the use and workings of marina facilities.

Response Equipment at Spud Point

The marina does have some equipment to respond to a spill from their fuel dock. They have 250' of absorbent type boom, 150' of absorbent skimmers, 5-7 bales of pads (300 pads per bale) and absorbent sand. They also have numerous fisherman response kits (pads) for sale.

Interim Waste Storage

There are no permanent storage tanks for interim storage in Bodega Bay. There are large paved areas at which with the addition of berms and storm drain covers could be used for sorting and packaging of waste.

Oily waste is picked up from a 500 gallon storage tank on the fuel dock apron by a licensed hazardous waste hauler.

Secondary Staging Area

Doran Beach Regional Park has been designated a secondary staging area.

Doran Beach Regional Park is operated by the Sonoma County Regional Parks. The park provides access to both the protected wetlands in the south east corner of Bodega harbor and to the open ocean from the spit. The Coast Guard Station is located at the west end of the park. There is significant paved area (parking lots and roads) available for storage and helicopter landings. The park has 138 campsites, restrooms, RV dumping stations and a boat launch. There are minimal park administrative buildings (office and garage) available for use.

Westside Park/Doran Park	707/875-3540
County Park Administration	707/565-2041
County Sheriff's Dispatch	707/565-2121

Other Piers - There are numerous other privately operated piers in Bodega Bay. Because of conflicts with private operations, they are largely unsuitable for supporting response operations. However, in a major incident, they may play some role. Contact information for these facilities can be found in Appendix B.10, Sonoma County Resources, Coastal Access Areas.

Ocean Boat Launches – See Appendix C.7 for information on ocean boat launches which are state, county and privately owned.

Possible Remote Staging Sites

NOTE: There are no formal agreements for use of any of the private or State Park sites identified below as possible staging sites.

For a coastal spill, primary response operations will occur from Bodega Bay. However, clean-up and wildlife rescue operations will involve a smaller, localized response requiring the use of additional facilities in remote locations. The following list describes the major sites which could be used for various aspects of response, wildlife rescue and clean-up operations. (For additional information on wildlife rehabilitation, please see Appendix C.16, Animal Rescue-Recovery Groups)

The state and local parks, subject to park occupancy, offer the best sites for temporary staging areas. During peak times, the parks may be full but in the event of a major release, especially if oil is reaching the beaches, park visitors can be expected to leave the area.

There is a quick reference list of the sites listed below in Appendix B.9, Sonoma County Resources, Staging.

Point Arena/Gualala

For a large spill affecting both Mendocino and Sonoma County, staging operations would probably be located in Point Arena or Gualala. Both are urban service centers and Point Arena has seasonal port facilities. This information is identified in the Mendocino County Plan.

Gualala Point Regional Park

Gualala Point Regional Park is owned and operated by Sonoma County Regional Parks. There is limited phone service (a single line park office phone and a pay phone) and no boat launch facilities. The Gualala River mouth is closed for much of the year.

The park could be used as a staging area for cleanup operations and wildlife rescue operations. Facilities which could be used include the visitor's center and parking lot on the west side of Hwy 1. There is also an 18 unit campground and park office/garage located on the east side of Hwy 1. The park office is very small.

Gualala Point Regional Park	707/785-2377
County Park Administration	707/565-2041
County Sheriff's Dispatch	707/565-2121

The Sea Ranch

A possible staging center/command center may be located at the Sea Ranch Business Center, located on Verdant View, off Annapolis Road. The site is adjacent to both the Cal Fire Station and the Sea Ranch private landing strip. While there is insufficient office space available to accommodate a command center, there is adequate area available for temporary structures and storage of equipment. However, the available space is less than what Cal Fire usually uses for command centers. Communication equipment is available at the Cal Fire station and additional equipment could be brought to the scene.

Cal Fire Sea Ranch	707/785-2335
Cal Fire Ranger Unit Santa Rosa	707/963-4112
The Sea Ranch Administrative Offices	707/785-2444
The Sea Ranch Security	707/785-2701

Stewart's Point - 707/785-2406 Stewart's Point Store

Richardson Family is major landowner north and south of Stewart's point. They own Stewart's Point store and gas station (gas and diesel). There is a small boat launch ramp which has been used by the Coast Guard, Sheriff and DFG. Coastal access in this region is through private property. Consultation with longtime local residents is recommended as access points are limited due to steep cliffs and dangerous ocean conditions.

Salt Point State Park -707/847-3221 or district office - 707/865-2394

The Salt Point State Park's maintenance yard could be used as a staging center/storage area. The site is fenced and there is a maintenance garage. There is fuel on-site but park policy is not to provide fuel to other agencies or the Responsible Party/clean-up contractors since fuel is available from private sources at Gualala, Stewart's Point and Ocean Cove. The maintenance yard has phone and electrical service and a radio for park communications.

There are 110 campsites, dump station and restroom facilities available at the park. Many of the bathroom facilities at the coastal access/day use locations are closed during low use periods.

Ocean Cove - 707/847-3422 Ocean Cove Store

There is a gas station (no diesel), store, campground and boat launch ramp (10 ft wide concrete) usable during calm seas.

Stillwater Cove - 707/847-3245 park office or County Park Headquarters 707/565-2041

Stillwater Cove Regional Park is operated by the Sonoma County Regional Parks. The site could be used as a staging area for animal rescue operations and clean up operations. Portable buildings and communications would need to be brought to the site.

There is a small parking area on the west side of Hwy 1; no water, no boat launch facilities but an inflatable could be carried to water. The park's office, additional parking and a 23 unit campground, with a dump station, are located on the east side of Hwy 1. The eastside parking lot is large, not fenced with electricity located about 200 feet away.

Timber Cove Campground and Boat Landing - 707/847-3278

This privately owned facility has camping and day use facilities. There are electrical hook-ups. There is an electrical boat hoist for small boats and an air station for divers.

There is a CalTrans yard located directly across Highway 1 from the campground. This facility has an acre of available storage area and is fenced. There is also some heavy equipment (dump trucks, trucks with plows, graders and loaders) on site.

Fort Ross State Historic Park - 707/847-3268 Park Office or 707/865-2394 District Office

There is a 30 car parking lot and restrooms at this day use facility. There is a visitor center and a small office. There is a small boat ramp providing access to the underwater park. An oil spill may not reduce attendance at this historical park located on the bluff away from the water's edge.

Fort Ross Reef Campground - 707/847-3268 Park Office or 707/865-2394 District Office

There are about 20 sites at this campground. This campground is closed during the winter. There are no boat launch facilities.

Jenner – Note: River mouth is closed for much of the year 707/865-2394

There is a boat launch (10 foot concrete) owned by the State of California. There is a small (15 car) parking lot with additional parking across the street. Jenner is a small community with gas, food and accommodations.

Jenner to Bodega Bay

Numerous coastal access points between Goat Rock and Salmon Creek can provide individual staging areas for wildlife rescue and clean up operations. These access points are all signed from Highway 1 and have small parking lots. Most have narrow, steep trails leading to the beach. Some have bathroom facilities. These are under the jurisdiction of State Parks. - 707/875-3483 or 707/865-2394 district office.

Goat Rock Beach - 707/875-3483 or 707/865-2394 District office

There are two parking areas: on the jetty and north near the river and seal haul out area. Inflatables may be launched from the jetty during calm seas. However, before launching, consultation with local State Park rangers or lifeguards or longtime local residents is recommended.

Wright's Beach - 707/875-3483 or 707/865-2394 District office

Wright's Beach has 30 sites and bathroom facilities. Wright's Beach is a high wave energy sand beach. Sleeper waves are common and extreme caution should be exercised.

Bodega Dunes - 707/875-3483 or 707/865-2394 District office

Bodega Dunes Campground has 98 campsites and a trailer sanitation station and showers.

Salmon Creek - 707/875-3483 or 707/865-2394 District office

Salmon Creek has a 70 car parking lot and restroom facilities. There is a State Park office located on the south side of Salmon Creek.

Facilities on San Pablo Bay

Port Sonoma Marina

Harbormaster - 707/778-8055 day 707/579-5457 24 hr.

Asst Harbormaster - 707/695-5838 or 707/849-9510

The marina has no fuel. There is power and phone lines. There is outdoor lighting and security.

Docks /Support Equipment. The dock has a 3 ton hoist.

Channel Depth is -7mllw

Boat launch is across the channel at Black Point Marina

Berths – there is space available

Staging Areas: Has 5 acres of available land and a 600 car parking lot.

Communications: Dredge uses channel 72. Bait shop and fuel dock use channel 9

Training: Staff training is limited

Response Equipment: Has enough 3m absorbent boom to protect harbor or boom (200' boom; 500 pads)

Interim Waste Storage: Has room for storage of barrels of waste oil. Stores waste oil on site. Has a waste generator permit

E.II(e) Accommodations Contact Person, and Accommodations Listing

Local Lodging Coordinator

County Fire shall serve as the Local Lodging Coordinator (as required by State Statute). This responsibility does not mean that they will act as a travel agent and make individual reservations. County Fire shall monitor the availability of local accommodations and provide status reports. If needed, County Fire would activate the logistics section of the EOC. The Red Cross/Salvation Army can operate canteen facilities for response workers though they are not prepared to provide shelter for them. They can assist County Fire in finding accommodations for response workers.

Mass Care Facilities

The establishment of mass care facilities and shelter for residents displaced by an oil spill will be the responsibility of County Fire and the Red Cross.

Publicly Owned Facilities

There are limited public facilities in Sonoma County for housing response personnel. If facilities are required, Cal Fire can provide a list of appropriate locations and deploy temporary sleeping and kitchen structures.

Coast Guard Two Rock Facility

Some billeting is available for Coast Guard personnel at the Two Rock Training Facility, located between Bodega Bay and Petaluma. The number of available beds ranges from 25 to 250 beds depending on facilities schedule.

Permission would need to be requested through the Commanding Officer.

National Guard Armories - Located in:

Petaluma - 580 Vallejo - 707/762-2214

Santa Rosa - 1500 Armory - 707/545-2141 or 707/576-2406

- Temporary accommodations could be set up in the drill room (approximately 4000 sq. ft.).
- Additional kitchen and restroom facilities would need to be brought on site. There is an outdoor area which could accommodate them.
- Facilities are in use as homeless shelters from approximately October through April.
- Facilities are used one weekend a month for Guard training exercises.
- Use of the facilities is authorized by the Governor through CAL EMA.

State Park Facilities (Russian River District)

Campgrounds could be used if there were no conflicts with campers. Contact District Superintendent - 707/865-2394.

- Salt Point State Park - 110 campsites, trailer sanitation station
- Fort Ross Reef Campground - 25 campsites
- Wright's Beach Campground - 20 campgrounds,
- Bodega Dunes Campground - 98 campsites, trailer sanitation station, showers

Sonoma County Regional Parks

Campgrounds could be used if there were no conflicts with campers. Contact Sonoma County Regional Parks 707/565-2041

- Gualala Point Regional Park Campground - 18 campsites, trailer sanitation station
- Stillwater Cove Regional Park - 23 campsites, trailer sanitation station, showers
- Doran Beach Regional Park - 138 campsites, trailer sanitation station
- Westside Regional Park - 30 campsites, trailer sanitation station, showers

Private Accommodations

See Appendix B.8 – Sonoma County Resources - Lodging, for a partial listing.

Numerous private hotels and bed & breakfasts serve Sonoma County. Gualala, Bodega Bay, Santa Rosa and Petaluma are major service centers with multiple hotel accommodations. The rest of the coast is served by small lodges and individual Bed and Breakfast Inns.

Numerous accommodations located in Santa Rosa and Petaluma (approximately 45 minutes from Bodega Bay) - see phone book. In addition to listings in the phone book and AAA Tour Book the following organizations can provide current information about local accommodations:

Bodega Bay Area Chamber of Commerce
(serving the coastline from Fort Ross to Bodega Bay)
850 Coast Hwy 1, P.O. Box 146
Bodega Bay CA 94923
707/875-3866

Sonoma County Tourism Bureau
420 Aviation Blvd, Suite 106, Santa Rosa, CA 95403
707/522-5800
800/576-6662
707/539-7252 fax

E.II(f) Local or Nearby Airports

Airport Information

Sonoma County Airport is a controlled field with commercial service. Fuel and other services are available. It has been designated for use as a staging or marshalling area under mutual aid agreements.

The north coast is served by two other small landing strips, The Sea Ranch and Ocean Ridge. No services are available at these locations. Prior permission is necessary before using the Sea Ranch.

Specific facility information can be found in Appendix B.5, Airports. For more extensive information, consult the NOAA Airport Facility Directory – Southwest.

Procedure to restrict air space

- 1) Place a call to the Federal Aviation Administration
Oakland Air Route Traffic Control Center (ZOA ARTCC) - 510/797-3200
24 hr
 - 2) Identify the agency requesting closure and state the reason for the request.
- or
- 1) Place a call to the Sonoma County Control Tower - 707/546-4294
 - 2) Ask for the Controller in Charge (CIC)
 - 3) Identify the agency requesting closure and state the reason for the request.
 - 4) The CIC will contact the regional Office to get air space restricted.
 - 5) The whole process should take about an hour.

E.II(g) Potential Temporary Hazardous Waste Storage Sites and Procedures for Securing Necessary Permits or Variances

County Policy

Temporary storage sites may be necessary during a response to a major spill. However, Sonoma County recommends that the Unified Command direct the responsible party or their contractor to arrange for the immediate transportation of spill related hazardous waste to either recycling or permanent storage sites. In a marine oil spill, unless Sonoma County is the Responsible Party, Sonoma County shall not be the generator of hazardous waste. It shall be the responsible party or their contractor who is responsible for insuring that proper procedures are followed for use of hazardous waste manifests, bills of lading and obtaining an emergency hazardous waste identification number and eventual recycling or disposal. Further, the Responsible Party shall complete all remedial actions necessary for each temporary site so that the site may be certified "clean."

Recovered Liquid Waste - There are no facilities in Sonoma County with tanks available for the temporary storage of recovered oil. Because of Sonoma County's proximity to San Francisco Bay Area facilities, recovered oil shall be immediately transported to one of these facilities.

Recovered Oiled Solid Waste - Oiled solid waste (debris, sorbent materials and personal protective clothing) shall be packaged in the appropriate leak proof containers at the site where they are generated or recovered.

Transfer Sites

Oiled solid waste, which has been appropriately packaged at the site where generated or recovered, may then be brought to a central transfer location for consolidation while waiting transportation to a temporary or permanent disposal site. These transfer sites should have an impermeable surface (i.e. paved or lined) and temporary runoff controls (i.e. berms, blocking storm drains or culverts) must be installed. Materials may be stored for up to 144 hours at the transfer sites. The Sonoma County has identified the Refuse Disposal site at 500 Meacham Rd., Cotati as a possible transfer site.

Potential Temporary Storage Sites

The County of Sonoma has identified the County Road Maintenance Yard (2175 Airport Blvd., Santa Rosa) as the temporary storage location for contained, oiled solid waste. It may be stored at the County yard for up to 90 days.

For a spill in San Pablo Bay, temporary storage of oily waste may be located at the Port Sonoma Marina. This is a private facility with a hazardous Waste Generators permit.

Note: Identification in this plan does not relieve the Responsible Party or the Unified Command from securing all necessary permits or variances.

Transportation and disposal requirements

The transportation of oil and contaminated material to temporary storage sites during the emergency response to a discharge which occurs during a transportation related

accident is exempt from Cal-EPA requirements (e.g. manifests, ID #, and registration). Government vehicles are also exempt from the requirements if responding to a spill. A variance or an emergency permit from CAL-EPA Dept of Toxics is required for use of sites as temporary storage locations. Sonoma County expects that the Responsible Party or their contractor to contract with the appropriate companies to transport material to an interim storage site. It will be the responsible party or their contractor who is responsible for insuring that proper procedures are followed for use of hazardous waste manifests, bills of lading and obtaining an emergency hazardous waste identification number.

Procedures for Securing Permits

Upon the event of a spill, guidance on transportation and storage permit requirements is required from the following state agencies, either through their representatives on the Unified Command or through the following regional offices:

Cal/EPA- Toxic Substances Control Division: (916) 255-2002
24 hr #(800) 852-7550

Cal/EPA Regional Office (for permits) (510) 540-3734
(ask for Environmental Health Officer on Duty)

North Coast Regional Water Quality Control Board (707) 576-2220
San Francisco Bay Regional Water Quality Control Board (510) 464-1255

It is the responsibility of the responsible party or their contractor, in coordination with the Unified Command to have the waste accurately characterized for proper disposition and to obtain the necessary permits for the use of any site for temporary storage of hazardous waste. Title 22, Section 66270.13 & .14 lists specific information required for non-emergency permits. Although this information is not required for an interim emergency permit, it would be useful for further pre-identification of potential sites. Sonoma County would expect to participate through the Unified Command in those decisions which affect county resources.

Hazardous Waste Transportation Companies

The following is a partial list of companies, based in Northern California and licensed as used oil haulers. A larger list of all California companies is located in the Coast Guard Area Plan, OSPR Guidance Document for Waste Disposal and the Sonoma County Operational Area Hazardous Materials Incident Response Plan (Appendix L).

Name	Location	Phone	Licensed Oil Recycler
Evergreen Oil Inc.	Newark	415 739-4400	yes
H&H Ship Service Co.	San Francisco	415 543-4835	yes
Gardners Drain Service	Healdsburg	707 433-3830	no

E.II(h) Coastal Access Areas

Specific Local Access Information – Coast

For additional information, see Appendix B.10 - Sonoma County Resources - Coastal Access Areas.

NOTE: Access and ocean conditions are extremely hazardous in this region. Consultation with local park rangers or longtime local residents is strongly recommended.

Primary access to these sites is off Highway 1. Contacts are provided so that responders may determine seasonal and site specific information prior to responding. Beaches and their access may change due to erosion, tide and migration of creeks or rivers. Parking lots may have locked gates.

Much of the beach access in Sonoma County is in public ownership. While virtually all the access from Jenner south is in public ownership, there are private holdings at the Sea Ranch, Stewart's Point, Ocean Cove, Timber Cove and Jenner.

Sonoma County Sheriff's Dispatch (707/565-2121) should be used for after hours contacts for all private and public ownerships. Local law enforcement or fire departments can initiate action with landowners to secure access for oil spill response operations.

The majority of land from the Russian River to Bodega Bay is in public ownership with some private holdings at the Duncan's Point, Serena del Mar, Carmet, Salmon Creek and Bodega Bay.

Note: Sonoma County Sheriff's Office Dispatch should be used for after hours contacts for all private and public ownerships.

Specific Local Access Information - San Pablo Bay

Vehicular access to Port Sonoma Marina is off of Highway 37 west of Lakeville Highway.

Boat access is at the mouth of the Petaluma River. Nearest boat launch is across Petaluma River at Black's Point, off of Highway 37, west of the Petaluma River.

Contact:

Harbormaster	707/778-8055
Asst Harbormaster	707/695-5838 or 707/849-9510

E.II(i) Local Government Representative With Information on

Volunteer Response Groups: Assistant Chief, Hazardous Materials Manager

Animal Rescue Recovery Groups: Assistant Chief, Hazardous Materials Manager

Local Media/Public Information Contacts: Assistant Chief, Hazardous Materials Manager

E.III Personnel and Information Resources

See Appendix C.1-C.2 – Sonoma County Personnel and Information for Police Departments, Fire Departments, Hospitals, Port Authority/Harbor Masters, Salvage Companies, Towing Companies, Local Environmental Agencies, Water Intake Facilities, Environmental Interest Groups, Trucking Companies / Car Rentals, Media, Volunteer Organizations, Local Emergency Managers.

See Appendix B - Sonoma County Resources for Aircraft Rental, Lodging, Fishing Fleets and Ocean Boat Launches.

Special Teams

County Special Teams

Sonoma County does not have any special forces whose mission is specific to a marine release of a petroleum product.

Generally, responding fire department staff is trained to hazardous materials awareness level. Some departments have staff trained to the technician and specialist level. There are two Hazardous Materials Response Teams available through Sheriff's Dispatch.

In the case of a marine release, all of the above responders are able to provide identification and scene isolation services. However, these responders have do not usually have or deploy containment equipment for a marine release. In some circumstance, they made be able to deploy protective measures for sensitive resources.

Other Special Response Teams

Marine spill response contractors and other special teams (both government and private) are identified in the Coast Guard's Area Plan. These teams will be called out by either the Coast Guard or the Responsible Party.

Annex F: HEALTH AND SAFETY

F.I Site Safety Plan

A site safety plan (SSP) for response personnel will be developed early in the spill response. All local government agencies responding to a spill will be required to have the Agency Representative or designee read and sign the SSP and follow safety messages and requirements.

- Approach, recognition and evaluation guidelines
- Personal Protective equipment and emergency equipment guidelines
- Monitoring and decontamination guidelines

During any drills, County employees will use the State's Site Safety Plan. For additional information on site safety plans, see Appendix F of the Sonoma County Operational Area Hazardous Materials Incident Response Plan.

F.I(a) Approach, Recognition and Evaluation Guidelines

Sonoma County staff shall follow the guidelines for approach, recognition and evaluation as described in 29 CFR parts 1910 and Title 8, CCR, sections 3203, 3889-3410. Specific procedures are outlined in Section XII, Training, of Sonoma County's Operational Area Hazardous Materials Incident Response Plan.

Initial Response

If necessary, the County of Sonoma will dispatch public safety personnel to the scene. These public safety personnel will all have at least First Responder Operational Level training.

Their primary responsibility will be the establishment of a safe perimeter and crowd control measures to deny entry to the hazardous area. They will also relay current scene information to Sheriff's Dispatch. Procedures to be used by these personnel are described in Section XII, Training, of Sonoma County's Operational Area Hazardous Materials Incident Response Plan.

Secondary Response

Primary containment responsibility will rest with certified, licensed clean-up contractors authorized by the responsible party, the Administrator or the Captain of the Port. However, because of the deployment and travel time to parts of Sonoma County, a HazMat Team may be requested to respond and provide interim measures to stop or contain the release or protect sensitive resources from the release. Currently, HazMat Teams in Sonoma County have limited marine response capability.

ALL MEASURES WILL BE TAKEN ONLY AFTER THE CONSULTATION WITH AND APPROVAL OF SUCH MEASURES BY THE ADMINISTRATOR OF OSPR OR/AND THE CAPTAIN OF THE PORT.

F.I(b) Long Term Response and Clean up Operations

Primary clean up responsibility shall rest with certified, licensed clean-up contractors authorized by the responsible party, the Administrator or the Captain of the Port.

Requirements for workers engaged in hazardous waste operations and emergency response efforts are regulated under 29 CFR parts 1910 and Title 8 of the California Code of Regulations. Reductions or modifications in this training standard may be made if it can be demonstrated that an operation does not involve worker exposure or a reasonable possibility of exposure such as removing weathered oiled from beaches and wildlife rescue operations.

County employees, who do not have the appropriate training shall not work in the response area's "hot zone." Any entity requesting County staff to perform a special

function at the spill, shall also provide specific information about the training level required for this activity.

F.I(c) Personal Protective Equipment and Emergency Equipment Guidelines

Respiratory Protection Plan

All requirements for the use of personal protective equipment are described in 29 CFR parts 1910 and Title 8, CCR, sections 3203, 3889-3410 and shall be followed by County employees.

Because the Safety Officer (SO) is responsible for safety of response workers, it may be appropriate for the county to conduct assessments for human health effects of released product. County environmental or public health agencies are typically responsible for air monitoring and determining whether protective measures such as Shelter in Place or evacuation are necessary.

F.I(d) Monitoring and Decontamination Guidelines

All monitoring and decontamination procedures as described in 29 CFR parts 1910 and Title 8, CCR, sections 3203, 3889-3410 and those outlined in Appendix F of the Sonoma County Operational Area Hazardous Materials Incident Response Plan, will be followed by County staff.

F.II Respiratory Protection Plan

See section F.1(c) above.

F.III Required Safety Training

Policies and standards for training of Sonoma County staff who respond to hazardous materials incidents are contained in Section XII, Training, of the Sonoma County's Operational Area Hazardous Materials Incident Response Plan, This section outlines the levels of training required for level or job on a hazardous materials response team. The various levels include First Responder Awareness and Operations levels, Hazardous Materials Technicians and Specialists as well as On-Scene incident Commander. County Fire coordinates HAZMAT training for County agencies. Each County agency is individually responsible for ensuring that appropriate staff have proper training.

The primary function of County personnel, in addition to those duties listed elsewhere in this document, will be crowd and traffic control and support operations which do not require more than first responder awareness level training. Care should be exercised by response coordinators to avoid requesting County personnel to perform tasks for which they are not properly trained. Further, those requesting County personnel should indicate the training level required for the requested task.

F.III(a) Emergency Personnel Training Provisions

First responders are trained and equipped to the level that meets the needs of their jurisdictions. Most fire department personnel in Sonoma County have, at a minimum, Operations Level hazardous materials training. Specialized response equipment located in Sonoma County is identified in Appendix B.1-B.3 of this plan.

F.III(b) Training Documentation Provisions

There is no central repository within Sonoma County which lists County staff's current training levels. This information is maintained by each individual and his or her department or agency.

Documentation of response personnel's current training levels will be provided to the person responsible for training within the Logistics branch of the Incident Command by the individual agency sending response personnel.

F.III(c) Other Applicable Federal/State Training Requirements

It is the responsibility of the individual agencies to meet all federal and state training requirements identified for the level of their response capability. Agencies will provide documentation and credentialing as requested. Verification requires a formal written request through the agency's training coordinator.

Annex G: OPERATIONS

G.I List of Local Emergency Response Personnel

G.I(a) Local Response Coordinator to Coordinate and Direct Response Operations

County Fire and Sheriff's Dispatch (707) 565-2121 serve as the central answering point for all County response resources and are responsible for:

- Providing primary response for hazardous materials incidents in unincorporated areas;
- Providing assistance to any city that calls upon county mutual aid;
- Maintaining the County Emergency Operations Center and serving as the command center for a multi-agency response.

County Fire will activate the Op Area EOC during a large-scale emergency. The Op Area EOC will be commanded by the CAO or designee (the Director of County Fire). Thus County Fire's primary responsibility during an emergency is to activate and manage the Op Area EOC for the purpose of coordinating a multi-agency emergency response.

County Fire serves as the primary communication link to the Cal EMA.

Key Contact: Emergency Manager (707)565-2121 (24 hrs)
(707)565-1152

Alternate Key Contact:

Director of County Fire (707)565-2121 (24 hrs)
(707)565-1152

For most oil spill response efforts, Incident Command will be delegated to County Fire who will manage operations under the direction of the CAO.

G.I(b) Provisions to Initiate Notification

Emergency Notification Procedures

INITIAL NOTIFICATIONS

If Spill is First Reported to Coast Guard or Cal EMA

Federal law requires a spiller to notify the National Response Center in the event of a release or threat of a release of a petroleum product. State Law requires the spiller to notify the State EMA. Under an agreement between the Coast Guard and the State of California, each entity will notify the other.

Under the MOU between the State and Sonoma County, as per sections 8562.62.2 (a) (1))(a), the State will notify Sonoma County through their Key Contact identified as Sheriff's Dispatch (707/565-2121). The Key Contact will then initiate the appropriate county notifications. (Figure 3)

If Spill is First Reported to Sonoma County (911)

Though notification of the Coast Guard or Cal EMA is mandatory, a spiller or innocent observers will often dial local emergency services (911). If the first notification is to Sonoma County 911 services, Sheriff's Dispatch personnel will attempt to secure all applicable information for relay to the appropriate federal, state and local agencies. A simplified set of questions to be asked of a spiller/observer by Sheriff's Dispatch personnel can be found in Figure 4.

Sheriff's Dispatch personnel will make the appropriate notifications (Figure 5). Notification of the State EMA is mandatory. Notification to the Marine Safety Office (MSO) at Alameda is recommended. If notification is made to the MSO Alameda, it is not necessary for Sheriff's Dispatch personnel to notify the National Response Center or any other local Coast Guard stations.

Agency	Contact Number
Cal EMA Warning Center	1-800-852-7550
Coast Guard Marine Safety Office	1-510-437-3073
local/county notifications	<i>on record with Sheriff's Dispatch</i>

In most HAZMAT releases, the Incident Commander has primary responsibility for requesting Sheriff's Dispatch to initiate the specific call-out of federal, state and local agencies for each incident. However, under the notification protocol for a release of a petroleum product, the Cal EMA will assume responsibility for the notification of the State Agencies (Figure 3). This notification procedure should reduce duplication of calls.

Nothing in this notification protocol shall prevent the County from directly contacting any local state agencies' unit (i.e. CHP, CalTrans, State Parks) for immediate mutual aid, if the situation warrants such action.

Secondary Notifications

A petroleum release, or threat of a release, may require notification of private entities, not associated with federal, state or local government. These may include response contractors, wildlife rescue, fishing and marine organizations, private recreational facilities, local landowners and environmental and public interest groups. The Responsible Party shall be responsible for contacting response contractors, and for other notifications to private parties, as may be required by the Unified Command. If there is no Responsible Party, the County will assist the State of California with these notifications.

County Notifications

The size/location of the spill will determine the level of notification and activation of local agencies, staff and resources.

For a minor spill with no threat to human life or sensitive resources and within the clean-up capabilities of the spiller or its contractor, Sheriff's Dispatch will notify County Fire and other agencies as necessary (Figure 5). County Fire will notify the CAO and upon his or her direction act as the Local Response Coordinator. After consultation with the Local Response Coordinator, each agency will be responsible for fulfilling their charge. No major notification or activation of County resources will be initiated.

For a medium sized spill with some threat to residents or sensitive resources and for which clean-up operations will be maintained over a period of days, Sheriff's Dispatch will notify County Fire and other agencies as necessary (Figure 5) and, if there is no responsible party will assist with notifications of environmental interest groups as required (numbers found in Appendix C.10 and C.12). County Fire will notify the CAO and upon his or her direction act as the Local Response Coordinator. The EOC may be activated and some county agencies may be requested to perform certain tasks. Each County Agency will follow their specific operation procedures for a Hazardous Materials release (as identified in the Sonoma County / Operational Area Emergency Operations Plan and County Hazardous Materials Plan) as required by the incident and as directed by the Response Coordinator.

For a large, catastrophic spill which will have an major impact on the Sonoma coastal or bay waters, and result in a long-term response effort, Sheriff's Dispatch will notify the Local Response Coordinator (CAO), County Fire and other agencies as necessary (Figure 5). The CAO will consider initiating a Proclamation of a Local Emergency. Sheriff's Dispatch, upon direction from the County Local Response Coordinator may initiate additional notifications and, if there is no responsible party, will assist with notifications of environmental interest groups as required (numbers found in Appendix C.10 and C.12). Each County Agency will follow their specific operation procedures for a Hazardous Materials release (as identified in the Sonoma County / Operational Area Emergency Operations Plan and County Hazardous Materials Plan) as required by the incident and as directed by the Local Response Coordinator.

NOTIFICATION LISTS

It is a policy of Sonoma County to not publish the confidential numbers of employees. These numbers, as well as the current roster of on-call personnel for each department, are available to Sheriff's Dispatch personnel and to Cal EMA personnel.

Specific contacts and request by OSPR and the Coast Guard for county resources shall be made through the Key Contact (Sheriff's Dispatch) or the Response Coordinator (CAO or Designee: County Fire). Sheriff's Dispatch shall be responsible for maintaining and providing, if requested, current contact information.

EMERGENCY WARNINGS

Local Government is responsible for warning county residents of any impending threat to their safety. If the incident poses a major and immediate threat, warning notification will be initiated by the Sheriff's Dispatch, after consultation with County Local Response Coordinator. Public warnings will be accomplished using the Emergency Alert System and specially equipped vehicles and aircraft staffed by Law Enforcement and other public safety personnel.

Figure 4 Spill Report Intake Questions

Initials _____
Date/Time _____
Incident # _____

Question	Response
Caller's name, number/frequency and location from which they are calling	
Have any other authorities been contacted?	
Any injuries?	
Have any evacuations occurred? Should they be initiated?	
Is the Responsible Party on scene? Are you calling for the Responsible Party?	
Contact, address and phone numbers of Responsible Party.	
Time the incident occurred or was discovered	
Specific location of the incident.	
Type of material released.	
Source of the release.	
Cause of the release.	
Quantity of release.	
Was material released to air, water, ground or subsurface?	
Weather and site conditions.	
Vessel name, type or identifying information.	
The caller's home or business phone and address.	

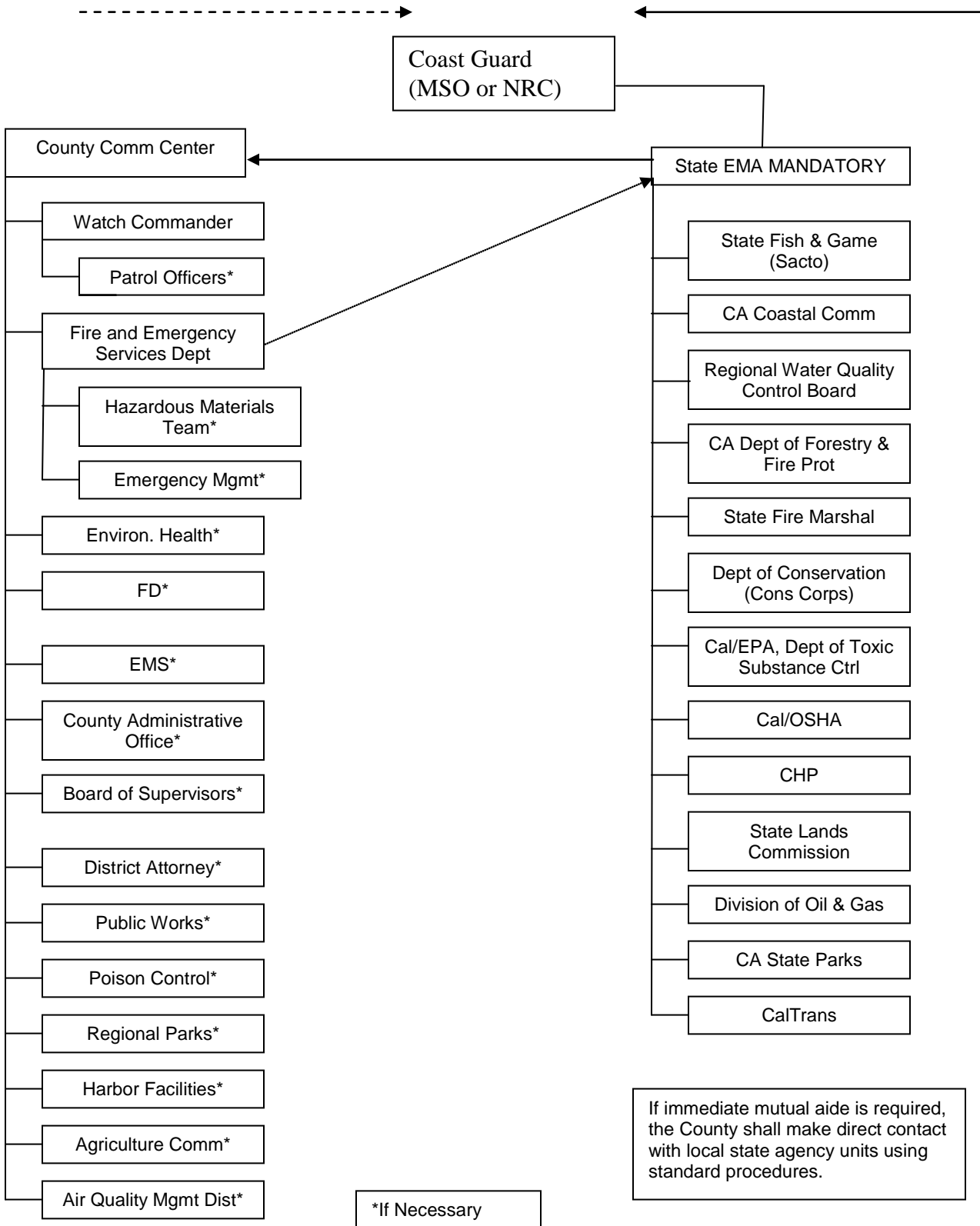
Emergency Notification Procedures

Figure 5

Spill Notification Chart

If call comes to the County

If call comes to the State



G. II Volunteer Management

Procedures for the Use of Volunteers

Note: This section does not address Volunteer Organizations Active in a Disaster (VOAD) workers which already have an established relationship with County Fire. The County will use VOAD's per their established operating procedures. There may be additional safety or hazardous materials training required for VOAD's to be used in certain operations.

General

Under the Act, the Administrator of OSPR is permitted to train and use volunteers for response, containment, clean up and restoration efforts. The Act further provides that all workers used by DFG are to be considered state workers for the purpose of workers' compensation. To meet this requirement the state requires that these volunteers 1) register, 2) sign Pledge of Allegiance and Permission to Work [STD 689 (revised 12/84)] forms and 3) complete the appropriate training.

Volunteer Types

Volunteers fall into two main categories: pre-trained and convergent. As of 1993 (this document precedes the state's volunteer training program), pre-trained volunteers will be primarily wildlife rescue and rehabilitations workers. These workers will respond through their established wildlife care groups. These wildlife groups are already identified by both OSPR and the Coast Guard. Convergent volunteers will spontaneously appear to help and may or may not be associated with a public interest, environmental or professional organization. All convergent volunteers shall be routed through the Volunteer Center of Sonoma County in accordance with Sonoma Inter-Agency Disaster Response Plan.

During a spill, volunteers are often hired by the Responsible Party. As part of the intake process, the Volunteer Center will determine if a volunteer is actually seeking or willing to accept employment. Any volunteer, pre-trained or convergent, who wishes to become employees of the Responsible Party shall not be processed and/or trained through the Volunteer Center and shall not be considered employees of the State. They shall be referred to the RP for registration and training.

Volunteer Management in the Unified Command

The management and coordination of volunteers is handled through the Human Resources Unit in the Logistics section of the EOC. Coordination from the Sonoma County Volunteer Center shall be integrated into this unit.

Responsibilities of the Volunteer center

- 1) Serve as a central intake for convergent volunteer.
- 2) Conduct initial interviews to determine availability, skills, and current training of convergent volunteers.
- 3) Complete the volunteer registration process as per local and state requirements.
- 4) Schedule the volunteers for all appropriate trainings.
- 5) Dispatch volunteers to required jobs.

- 6) Demobilization/follow up of volunteers.

Responsibility of the County's EOC Logistics Human Resources Unit

- 1) Identify volunteer needs.
- 2) Identify the skills and training required for the volunteer position.
- 3) Maintain a list of training sessions.
- 4) Communicate all appropriate information (job type, training requirement, duration, location, supervisor, etc.) to the volunteer center.
- 5) Ensure that the PIO has issued the appropriate volunteer information (i.e. Volunteers are not needed or volunteers are needed - please go to the Volunteer Center).

Recruitment of Volunteers

If volunteers are needed, the volunteer center shall first attempt to find existing groups with the required skills. If volunteers are not available through these groups, the volunteer center shall issue request for volunteers through the media.

Registration of Volunteers

Registration of volunteers shall be done according to the Volunteer Center's policy and in accordance with state requirements.

For further information refer to Sonoma County's volunteer management plan, "*Maximizing Volunteers as a Resource During Disaster: A Model for Local Government and Volunteer Center Collaboration*".

G.III Wildlife

For a complete review of the California Wildlife Response Plan please see the *Regional Contingency Plan, Appendix VII, California State Response System*.

For information on local Animal Rescue and Recovery Groups, see Appendix C.16 – Sonoma County Personnel and Information

Lead Agencies

Wildlife rescue and rehabilitation operations will be performed under the direction of the Department of Fish and Game and the Fish and Wildlife Service. Generally, the responsible party is required to contract for such services.

The lead groups are International Bird Rescue and Research Center (IBRRC) and the Marine Mammal Center (MMC). Local animal rescue groups already have an established relationship with IBRRC or MMC. Local groups shall be directly contacted by IBRRC or the MMC. The Sonoma County Animal Care and Control, as much as is possible, shall assist these groups in the locating and setting up of any stabilization or rehab sites.

Training Requirements

See 14 CCR 679(d) "Prohibition on Picking Up Disabled Wildlife in a Department Designated Oil/Toxic Spill Area" for additional information.

There are specific training requirements, both hazardous materials and animal handling, for wildlife rescue. Although additional specific training can be provided, convergent volunteers interested in wildlife rescue shall be screened for a minimum amount of animal handling background and a willingness to provide a specific time commitment.

Collection

Collection of wildlife, injured or dead, must be systematic. It is critical that any animal collected is documented at the time of collection. Such documentation is necessary for the rehabilitators or for natural resources damages assessment.

Public Advisory

During a major release, a public advisory shall be issued which explains that it is counter-productive for citizens to independently collect wildlife.

Possible sites for collection and stabilization

Sonoma County Regional Parks - These are probably best used as collection and stabilization sites.

- Visitors Center at Gualala Point Regional Park
- Garage shed at Doran Beach Regional_Park

Both have heat and ventilation, on site parking and restroom facilities.

Contact Sonoma County Regional Parks 707/565-2041 or Gualala Point Regional Park 707/785-2377.

For additional discussions on coastal staging areas, please see Appendix B.9, Sonoma County Resources, Staging.

Possible sites for rehabilitation

National Guard Armories - Located in

- Petaluma - 580 Vallejo
- Santa Rosa - 1500 Armory
 - Approximate square footage of main room is 2,500 - 3,000 with concrete floors.
 - Facilities have a kitchen, restrooms and additional classrooms.
 - The rooms have heat and ventilation.
 - Water supply is adequate and there is a hydrant on site (at least for Santa Rosa).
 - No way to dispose of oily wash water (drains under wash racks for Guard vehicles have been closed down because of inadequate pre-treatment).
 - Facilities are in use as homeless shelters from approximately October through April.
 - Facilities are used one weekend a month for Guard training exercises.
 - Use of the facilities is authorized by the Governor through Cal EMA.

Sonoma County Fairground

- Adequate Space

- No ability to dispose of wash water
- Major booking conflicts during the spring, summer, fall.
- Use would be authorized by Sonoma County.

Annex H: Finance

H.1 Spill Funding Procedures

The State of California Department of Fish and Game's Office of Spill Prevention and Response (OSPR) is the lead agency in responding to oil spills in marine waters of the state. Generally, the state and local government agencies perform removal actions under the direction of the incident's Unified Command. Working within the Incident Command System (ICS) structure, OSPR can assist state and local agencies to recover their response costs.

Responsible Party Funds - In most cases, responsible parties are held liable for all damages and costs incurred as a result of an oil pollution incident. In the event a responsible party is designated and accepts financial responsibility to pay full spill response costs, state and local agencies should seek reimbursement directly from the responsible party. In some instances, these costs will be coordinated through OSPR.

Federal Funds - If the Federal Oil Spill Liability Trust Fund is opened to provide funds for a spill incident, the OSPR will function as finance liaison for state agencies. Local government agencies should seek reimbursement directly from the Federal On-Scene Coordinator (FOSC). Whenever the Federal Fund is opened, each state and local agency should immediately submit a Pollution Removal Funding Authorization Request (estimating their costs of response, and listing activities authorized by the Incident Command) (sample attached) to ensure that cost approval is granted. After receiving authorization to perform removal request via an SF-1080 (federal form). State agencies shall submit their SF-1080 to OSPR, and local agencies shall submit their SF 1080's to the FOSC for approval and forwarding to the National Pollution Funds Center for payment. For further information and forms, please refer to Annex C, Operational Administration, Appendix I, Spill Funding Procedures,[@] of the National Contingency Plan.

State Funds - If federal funds are not available, or will not be available in an adequate period of time, and a responsible party does not exist or is unable or unwilling to provide adequate and timely cleanup and to pay for the damages resulting from a marine oil spill, then the State of California Oil Spill Response Trust Fund may be used to pay necessary costs for responding to, containing, and cleaning up the oil spill. State and local agencies should submit their invoices to the State of California Office of Spill Prevention and Response. If a claim is under \$50,000, the claim may be submitted directly to OSPR. If the claim exceeds \$50,000, it must be submitted to the federal fund prior to submission to OSPR.

H.2 Documentation and Cost Recovery Procedures

Documentation Requirements - In order to recover costs, expenses must be properly documented to provide an accurate accounting of payments due. Furthermore, if litigation is required, documentation must be admissible in court. Documentation requirements will vary between responsible parties. If reimbursement is being sought from a responsible party, documentation requirements should be coordinated with the responsible party, discussed and agreed upon as early as possible in the response process.

Cost documentation should be completed as close to the time of activity as possible. When completed, the documentation should provide a complete and accurate audit trail for internal and external auditors so that compliance with applicable regulations, guidelines, and procedures can be verified. Documentation should, at a minimum, include the following:

Personnel Costs - Detail should include; name of employee, classification, activity/duty, hours worked, hourly salary and total costs for employee on a daily basis. These daily costs should be summarized to total the entire personnel costs of the billing period.

Operating Costs - Line-item or object detail should be provided on a daily basis, with a summarized total by billing period. Equipment usage costs should be detailed and include the hourly or daily usage rate of each item.

Each agency should provide adequate cost documentation to support each item of expense. For example; copies of signed employee time reports, and support for the hourly billing rates (how the rates were determined); copies of vendor invoices; and travel expense claims, including airline and rental care charges, per diem and mileage charges and per diem schedules.

If federal funds are sought, these two documentation methods are accepted by the National Pollution Funds Center:

The Pollution Incident Daily Resource Reporting System (PIDRRS). Refer to Technical Operation Procedures for Resource Documentation under The Oil Pollution Act of 1990" and Annex C, Procedures, of the National Contingency Plan.

A National Pollution Funds Center approved alternate record keeping system. You may use this or an alternated form containing comparable documentation.

Questions can be directed to the Marine Cost Recovery Unit, Office of Spill Prevention and Response, at (916) 322-4452.

H.3 Third Party Claims

Third party claims for economic losses will be referred directly to the Responsible Party(ies). However, third party claims that are more than \$50,000 must first be submitted to the Responsible Party and the National Pollution Fund Center for payment, and be wholly or partially rejected, before DFG-OSPR can accept the claim for payment. If no Responsible Party(ies) is identified, third party claims may be submitted to the National Pollution Fund Center or to the OSPR Administrator, pursuant to Government Code section 8670.51.1.

	A	B	C	D	E	F
1	Economically Sensitive Areas in Sonoma County					
2	Line No.	Site Name	Site Description	Economic Sensitivity	Site Function	Site Address
3						
4						
5						
6	7	Sonoma Bodega Fish/ Ocean Farms Inc	Estero w/Water Intake (appears to be in Sonoma County)	D/E	Private Mariculture Facility	
7						
8						
9						
10	9	Gualala Point Regional Park		E	County Park	
11						
12						
13	10	Sea Ranch		E/F	6 Public Coastal Access Ways, Residential Area County Managed Recreation Access Ways	
14						
15						
16						
17	11	Stewarts Point		E	Private ownerships	
18						
19	13	Salt Point State Park		E	State Park	
20						
21	14	Ocean Cove		E/F	Private Recreation Facilities, Boat Launch, Camping, Accommodations, Private Residences	
22						
23						
24						
25	15	Stillwater Cove County Park		E	County Park	
26						
27	16	Timber Cove		E/F	Residential Accommodations	
28						
29	17	Fort Ross		E	Camping, Accommodations	
30						
31	18	Fort Ross Historic Park		E	State Park	
32						
33	19	The Reef Campground		E	State Park, Camping	
34						
35	20	Jenner, Russian Gulch, Russian River, Goat Rock		E	Private and Public Recreational Facilities, Boat Launch, Accommodations and Private Residences	
36						
37						
38						
39	21	Blind Beach		E	Coastal Access, Recreation	
40						
41	22	Shell Beach		E	Coastal Access, Recreation	
42						

	A	B	C	D	E	F
2	Line No.	Site Name	Site Description	Economic	Site Function	Site Address
43	23	Wrights Beach		E	Coastal Access, Recreation, Camping	
44						
45						
46	24	Duncans Landing		E	Coastal Access, Recreation	
47						
48	25	Duncans Cove		E	Coastal Access, Recreation	
49						
50	26	Gleason Beach		E	Coastal Access, Recreation	
51						
52	27	Portugese Beach		E	Coastal Access, Recreation	
53						
54	28	Schoolhouse Beach		E	Coastal Access, Recreation	
55						
56	29	Carmet Beach		E	Coastal Access, Recreation	
57						
58	30	Marchall Gulch		E	Coastal Access, Recreation	
59						
60	31	Arched Rock Beach		E	Coastal Access, Recreation	
61						
62	32	Coleman's Beach		E	Coastal Access, Recreation	
63						
64	33	Miwok Beach		E	Coastal Access, Recreation	
65						
66	35	Bodega Head West		D/E	UC Marine Lab, Horseshoe Cove	2099 Westside Road, Bodega Bay
67		from Westside Road				
68						
69	36	Bodega Harbor		D/E	Harbor	
70						
71	37	Westside Regional Park	Owned/Operated by	E	Day Use, Camping, Boat Ramp	
72			Sonoma County			
73			Regional Parks			
74						
75	38	Spud Point Marina	Owned by	E	Commercial and Recreational Ber	1818 Westshore Road, Bodega Bay
76			Sonoma County		Ice, Fuel	
77						
78	39	Masons Marina	Privately Owned	E	Commercial and Recreational	1820 West Shore Road, Bodega Bay
79					Berths, Fuel	
80						
81	40	Harbor Fisheries	Privately Owned	D/E	Fish Company	
82						
83	41	Porto Bodega	Privately Owned	D/E	Commercial, Recreational Berths,	1500 Bay Flat Road, Bodega Bay

	A	B	C	D	E	F
2	Line No.	Site Name	Site Description	Economic	Site Function	Site Address
84					Fuel	
85						
86	42	Numerous Small Businesses		E		
87						
88	43	The Tides		D/E	Commercial Fish Company,	Bodega Bay
89		East of Hwy 1			Restaurant, Accommodations East	
90					of Hwy 1 800 Highway 1	
91						
92	44	Lucas Wharf		D/E	Commercial Fish Company, Restaurant	
93						
94	45	Doran Park		E	County Park, Boat Launch, Camping	2300 County Center Drive A120
95		Doran Park Road				Santa Rosa
96		West of Hwy 1				
97						
98	46	Coast Guard Station		E	SAR Facility	
99						
100	47	Bodega Fish Farms	Ocean Farms, Inc.	D/E		Estero Lane, Off Hwy 1
101						
102		Bodega Harbour Golf Links	Privately Owned	F	Public Golf course, clubhouse	21301 Heron Dr. Bodega Bay
103						
104		Bodega Harbour Yacht Club	Privately Owned	F	Public restaurant, event facility	565 Smith Brothers Rd. Bodega Bay
105						
106		Bodega Harbor Inn	Privately Owned	F	Accommodations	1345 Bodega Ave., Bodega Bay
107						
108		Diekmann's Bay Store	Privately Owned	F	Store, Deli	1275 Hwy 1, Bodega Bay
109						
110		Jenner Inn & Cottages	Privately Owned	F	Accommodations, restaurant, event	10400 Hwy 1, Jenner
111						
112		Dog House	Privately Owned	F	Restaurant	575 S Hwy 1, Bodega Bay
113						
114		Petaluma Marina	City of Petaluma	E/F	Dock, slips, fuel, electricity,	781 Baywood Dr, Petaluma
115					water, ice, showers, restrooms,	
116					launching ramp	
117						
118		Petaluma Turning Basin	City of Petaluma	F	Dock, water, electricity, restrooms	
119						
120		Numerous businesses	Privately Owned	F		Water St. & Western St., Petaluma
121						
122		Petaluma Yacht Club	Privately Owned	E/F	Dock, electricity, restrooms,	10 C St., Petaluma
123					clubhouse	
124						

	A	B	C	D	E	F
2	Line No.	Site Name	Site Description	Economic	Site Function	Site Address
125		Gilardis Lakeville Marina	Privately Owned	E/F	Dock, restaurant, water, ice,	5684 Lakeville Hwy, Petaluma
126					restrooms, showers, boat launching	
127					ramp	
128						
129		Chanslor Ranch	Privately Owned	F	Horseback riding	2660 Hwy 1, Bodega Bay
130						
131		Russian River Outfitters	Privately Owned	F	Store	25375 Steelhead Blvd, Duncan Mills
132						
133		Water Treks	Privately Owned	E/F	Water sports	PO Box 39, Jenner
134						
135		Monte Rio Recreation & Park Dist	Special District	F	Office	20448 Hwy 116, Monte Rio
136						
137		Northwood Golf Course	Privately Owned	F	Golf course	19400 Hwy 116, Monte Rio
138						
139		Burke's Canoe Trips	Privately Owned	E/F	Canoe rentals	Mirabel Rd @ 8600 River Rd
140						Forestville
141						
142		Johnson's Beach	Privately Owned	E/F	Public beach	16241 1st St
143						Guerneville
144						
145		King's Sports	Privately Owned	F	Kayak rentals, rivertrips	16258 Main St., Guerneville
146						
147		Soar Inflatables/Russian River	Privately Owned	E/F	River rafting	20 Healdsburg Ave, Healdsburg
148		Adventures				

Sonoma County Airport	Ocean Ridge	Sea Ranch Airstrip
2200 Airport Road Santa Rosa, CA	Gualala, CA John or Peggy Bower	Sea Ranch Property Manager - Sea Ranch Association
Airport Manager 707/565-7243 (8am-5pm)	707/884-3573 707/884-3579 (24/hr) Prior Permission required for night landings or , if there was a major spill, resulting in significant increase in traffic.	707/785-2444 707/785-2701 (24/hr) Unattended - open days, closed nights
707/565-2121 (24/hr)	CTAF 122.8	Private airstrip. Permission required for all landings by non-members
Tower open 7am-8pm	FSS Oakland 800/992-7436	CTAF 122.9
Prior Permission Required for Aircraft over 95,000 lbs	High Alt Chart # San Francisco	FSS Oakland 800/992-7436
CTAF/tower 118.5	ARFF	High Alt Chart # San Francisco
FSS Oakland 800/992-7436	No fuel available	TPA 1300 MSL
High Alt Chart # San Francisco H-2A,L-2-G, IAP	Length of runway 2500 ft	Length of Runways 2600 ft
ARFF Index A		ARFF
Fuel available grade 80 gas, 100LL, jet A		Security - locked gate at night
Hours of Fuel Ops 707/528-7400		
707/433-4602 24hr		
Security - patrol service		

Sonoma County Law Enforcement Agencies		
AGENCY	PHONE	24-HR PHONE
Sonoma County Sheriff	707/565-2121	911
California Highway Patrol	707/588-1400	911
Cloverdale Police Department	707/894-2525	911
Cotati Police Department	707/792-4614	911
Healdsburg Police Department	707/431-3366	911
Petaluma Police Department	707/762-2727	911
Rohnert Park Dept of Public Safety	707/584-2611	911
Santa Rosa Junior College	707/527-1000	707/522-2770
Santa Rosa Police Department	707/528-5222	911
Sebastopol Police Department	707/829-4400	911
Sonoma Police Department	707/996-3601	911
Sonoma State University	707/664-4444	707/664-4444
Windsor Police Department	707/565-2121	911

Sonoma County Fire Agencies		
City/County Fire Departments	PHONE	24-HR PHONE
Sonoma County Dept of Emergency Services	707/565-2121	911
California Dept. of Forestry & Fire Protection	707/576-2089	911
Cloverdale Fire Department	707/894-2525	911
Cotati/Rancho Adobe Fire Department	707/576-1365	911
Healdsburg Fire Department	707/431-3360	911
Petaluma Fire Department	707/762-2727	911
Rohnert Park Dept of Public Safety	707/584-2611	911
Santa Rosa Fire Department	707/528-5151	911
Sebastopol Fire Department	707/823-2434	911
Sonoma Valley Fire & Rescue	707/996-2101	911
Windsor Fire Department	707/565-2121	911
Volunteer Fire Departments		
Bloomfield		911
Bodega		911
Camp Meeker		911
Fort Ross		911
Knights Valley		911
Lakeville		911
Mayacamas		911
Mountain		911
San Antonio		911
Sea Ranch		911
Sotoyome		911
Two Rock		911
Valley Ford		911
Wilmar		911
Fire Districts		
Bennett Valley	707-578-7761	911
Bodega Bay	707-875-3700	911
Cazadero	707-632-5482	911
Forestville	707-887-2212	911
Geyserville	707-857-3535	911
Glen Ellen	707-996-9266	911
Gold Ridge	707-823-1084	911
Graton	707-823-5515	911
Kenwood	707-833-2042	911
Monte Rio	707-865-2067	911

City/County Fire Departments	PHONE	24-HR PHONE
Occidental		911
Rincon Valley		911
Russian River		911
Schell-Vista		911
Sonoma Dev. Center/Eldridge FD		911
Timber Cove		911
Two Rock Coast Guard FD		911

Sonoma County Hospitals and Emergency Medical Services				
Hospitals				
Name	Address	Phone	Fax	Notes
Redwood Coast Medical Services	46900 Ocean Drive, Gualala	707/884-4005 24 hr	707/884-4625 fax	office hours 9- 5 emergency services are available
Sutter Medical Center	3325 Chanate Road, Santa Rosa	707/576-4000 707/576-4040 ED	707/576-4318 admin f 707/576-4060 ED fax	Helipad
Sonoma Valley Hospital	347 Andrieux Street, Sonoma	707/935-5000 Main 707/935-5106 ED	707/935-5110 ED Fax	
Healdsburg District Hospital	1375 University Ave, Healdsburg	707/431-6500 Main 707/431-6300 ED	707/431-7214 ED Fax	
Santa Rosa Memorial Hospital	1165 Montgomery Dr., Santa Rosa	707/546-3210 Main 707/525-5207 ED	707/525-5296 ED Fax	Helipad
Kaiser Santa Rosa	401 Bicentennial Way, Santa Rosa	707/571-4000 Main 707/571-4800 ED	707/571-4741 ED Fax	
Sutter Warrack Hospital	2449 Summerfield Rd, Santa Rosa	707/542-9030 Main	707/523-7125 Fax	
Palm Drive	501 Petaluma Ave, Sebastopol	707/823-8511 Main 707-829-4370 ED	707/829-4147 ED Fax	Helipad
Petaluma Valley Hospital	400 North Mc Dowell Blvd., Petaluma	707/778-1111 Main 707/778-2634 ED	707/773-1519 ED Fax	Helipad
Emergency Medical Services				
Sonoma County EMS Agency	3313 Chanate Rd., Santa Rosa	707/576-4701 707/528-4192 Dispatch		

Sonoma County Local Emergency Managers			
Description	Location	Agency	Activation Procedures
Emergency Services Manager (for all of Sonoma County)	2300 County Center Drive, Santa Rosa	County of Sonoma Fire and Emergency Services	707/565-2121 (24hrs) or 707/565-1152

Sonoma County Port Authority/Harbor Masters				
Name	Address	Phone	Fax	Notes
San Pablo Bay - Harbormaster		707/778-8055		
Spud Point Marina-Harbormaster	1818 Westshore Rd, Bodega Bay 94923	707/875-3535	707/875-3436	

Sonoma County Fishing Fleets			
Business Name	Address	Phone	Notes
Fishermen's Marketing Association Inc of Bodega Bay	1370 Bodega Ave, Bodega Bay	707/875-3625	
Bodega Bay Sport Fishing Center	1410 B Bay Flat Rd, Bodega Bay	707/875-3344	
Bodega Chargers	Eastshore Rd, Bodega Bay	707/463-3618 office 707/391-7772 boat	
Sport Fishing Organizations (Note: Sport boats which fish off Bodega Bay may also be located at Pillar Point Harbor, Sausalito, San Francisco or Richmond.)			
Boat House - Bait Shop and Sport Dock		707/875-3495 shop	
Bodega Bay Sport Fishing Center		707/875-3344	

Ocean Boat Launches		
Location	Ownership	Contact Number
Stewart's Point	Private	707/785-2406
Salt Point	State	707/847-3221 or 707/865-2394
Ocean Cove	Private	707/847-3422
Timber Cove	Private	707/847-3278
Fort Ross	State	707/847-3268 or 707/865-2394
Jenner	State	707/565-2041
Westside County Park	County	707/875-3540

Sonoma County Salvage Companies					
Check with Sonoma County General Services for a current list of salvage companies under contract with the County.					

Sonoma County Towing Companies					
Check with Sonoma County General Services for a current list of towing companies under contract with the County.					

Local Environmental Agencies			
Description	Location	POC	Activation Procedures
Santa Rosa Fire Department - CUPA	Santa Rosa	Fire Chief	707/543-3500
Petaluma Fire Department - CUPA	Petaluma	Fire Chief	707/762-2727
Healdsburg Fire Department - CUPA	Healdsburg	Fire Chief	707/431-3360
Sonoma County Fire and Emerg Service	Santa Rosa	Fire Chief	707/565-1152
Sonoma County Environmental Health	Santa Rosa	Duty Officer	707/565-6565
Northern Sonoma County Air Pollution C	Healdsburg	Duty Officer	707/433-5911
Sonoma County Water Agency	Santa Rosa	Duty Officer	707/523-1070

Sonoma County Water Intake Facilities						
Description	Location	Agency	POC	Activation Procedures	Equipment	Notes
University of California Bodega Bay Marine Lab	Horseshoe Cove, west side of Bodega Head, south of Mussel Point	University of California	707/875-2211		Two 8" salt water intake for research facility.	Diversionary booming of Horseshoe Cove should be a priority. Access: Private road west from Westshore Road.
Bodega Fish Farms/Ocean Farms Inc	Mouth of the Estero Americano near the Sonoma/Marin County Line 1920 Estero Lane, Bodega Bay		Days 415/921-1355 24 hr 415/474-9066 24 hr 707/875-2298		Has one water intake in the mouth of the Estero Americana used for aquaculture operations	Access/Address Estero Lane runs south from Highway 1 between Bay Hill Rd and the Bodega Highway. Clean Bay has specific site information for Bodega Fish Farms/Ocean Farms Inc. During the Puerto Rican spill, Clean Bay installed a filter and other protective measure for this operation.
Emerald Pacific Seafoods	Bodega Bay		Dock Days 707/875-2250 Home 24hr 707/875-3002		Has one water intake for live crab tanks during crab season	

Sonoma County Environmental Interest Groups			
Name	Address	Phone	Notes
Audubon Society, Madrone Branch	P. O. Box 1911, Santa Rosa, 95402	707/546-7492	
Bodega Bay Concerned Citizens	P. O. Box 691, Bodega Bay, 94923		
Bodega Harbor Homeowner's Association	P.O.Box 368, Bodega Bay, 94923	707/875-3519	
Environmental Center of Sonoma County	P.O.Box 4346, Santa Rosa, 95402	707/578-0595	
	55A Ridgeway Ave, Santa Rosa, 95401	707/544-9861 Fax	
Sea Ranch Association	P.O.Box 16, The Sea Ranch, 95497	707/785-2444	
Sierra Club Redwood Chapter	P.O.Box 466, Santa Rosa, 95402	707/544-7651 general message	
Sonoma County Group	55A Ridgeway Ave, Santa Rosa, 95401	707/544-9861 fax	
Stewards of the Coast and Redwoods	P.O.Box 2, Duncan Mills, 95430	707/869-9177	stewards@mcn.org

Sonoma County Truck Companies and Car Rental Agencies						
Check with Sonoma County General Services for a current list of trucking companies or car rental agencies under contract with the County.						

Local Media - PIO Contacts			
In the event of an oil spill, the County of Sonoma Fire and Emergency Services Department shall serve as the County's Public Information Office.			
Should the need arise for additional PIO's the Op Area's EOC can be activated for PIO support.			

Sonoma County Volunteer Response Groups			
Name	Address	Phone	Notes
Volunteer Center of Sonoma County	153 Stony Circle, Santa Rosa 95401	707/573-3399	volunteernow.org
USCG Auxiliary Sonoma County Flotilla			cgaux@yahoo.com Flotilla Commander

Sonoma County Animal Rescue/Recovery Groups			
Name	Address	Phone	Notes
Marine Mammal Center	Marin Headlands –GGNRA Center 2000 Bunker Rd Fort Cronkhite Sausalito, CA 94965	415/289-7325 415/289-7335 (admin)	
International Bird Rescue Research	699 Potter Street Berkeley, CA 94710	510/841-9086	
Bird Rescue Center	3430 Chanate Road Santa Rosa, CA 95404	707/523-2473	www.birdrescuecenter.org savebird@sonic.net
Seal Watch	P. O. Box 583 Occidental, CA	707/874-3987	
California Center for Wildlife	P. O. Box 150957 San Rafael, CA 94915	415/456-7286	
San Francisco Oiled Wildlife Care & Education Center	4369 Cordelia Rd. Fairfield, CA 94534	707/207-0380	info@ibrre.org
Sonoma County Department of Health Services	Animal Care & Control 1247 Century Ct Santa Rosa, CA	707/565-7100	sonoma-county.org/Shelter

SF 1080/1081: VOUCHER FOR TRANSFERS BETWEEN APPROPRIATIONS AND/OR FUNDS

A. The SF-1080/1081 is used by other government agencies to request reimbursement from the Coast Guard.

1. Documentation should be organized and summarized, to provide a clear audit trail from the detail to the SF-1080/1081 or invoice submitted for reimbursement. These submittals will be reviewed by the NPFC staff for continuity and propriety. Incomplete submittals will be returned to sender for corrective action.

B. HOW TO COMPLETE SF-1080/1081/GENERAL INFORMATION:

- 1. Voucher No:** Inserted by the agency submitting the SF-1080/1081.
- 2. Schedule No:** Inserted by the agency submitting the SF-1080/1081.
- 3. Department, establishment, bureau, or other receiving funds:** Federal agency submitting SF-1080/1081 (usually complete mailing address).
- 4. Bill No:** Used by federal agencies to identify accompanied invoice number.
- 5. Department, establishment, bureau, or office charged:** Address of CG-FOSC agency receiving reimbursement request.
- 6. Paid By:** Leave blank.
- 7. Order No:** Varies according to agency; numerical identifier for job (e.g. 0001, etc.).
- 8. Date of Delivery:** Date work began and was completed.
- 9. Articles or Services:** Brief explanation of how expenses were incurred; ensure Pollution Removal Funding Authorization Accounting String and Document Control Number are listed. Some agencies may choose to include their own in-house accounting information.
- 10. Quantity:** Entry varies.
- 11. Unit Price:** Entries depend on how specific work is identified; normally accompanied by an invoice and dailies to explain work specifics.
- 12. Amount:** Exact dollar amount of reimbursement.
- 13. Total:** Same as above.
- 14. Remittance in payment hereof should be sent to:** Mailing address of agency submitting SF-1080/1081.

C. ACCOUNTING CLASSIFICATION -OFFICE RECEIVING FUNDS

1. This section is completed by agency submitting SF-1080/1081. There should be a name listed as a point of contact with a telephone number.

D. CERTIFICATE OF OFFICE CHARGED

1. This is to be completed by NPFC staff after the SF-1080/1081 and its attached documentation has been reviewed.

E. ACCOUNTING CLASSIFICATION -OFFICE CHARGED

1. This section is completed by NPFC staff.

STANDARD FORM 1081 Revised September 1982 Department of the Treasury ITFRM 2-2500		VOUCHER AND SCHEDULE OF WITHDRAWAL AND CREDITS		
CHARGE AND CREDIT WILL BE REPORTED ON CUSTOMER AGENCY STATEMENT OF TRANSACTION FOR ACCOUNTING PERIOD ENDING			Transaction Date	
			Document No.	
CUSTOMER AGENCY		BILLING AGENCY		
Agency Location Code (ALC)	Customer Agency Voucher No.	Agency Location Code (ALC)	Billing Agency Voucher No.	
DEPARTMENT BUREAU ADDRESS		DEPARTMENT BUREAU ADDRESS		
SUMMARY		SUMMARY		
APPROPRIATION, FUND, OR RECEIPT SYMBOL	AMOUNT	APPROPRIATION, FUND, OR RECEIPT SYMBOL	AMOUNT	
(MUST AGREE WITH BILLING AGENCY) TOTAL	\$0.00	(MUST AGREE WITH BILLING AGENCY) TOTAL	\$0.00	
Details of charges or reference to attached supporting documents				
BILLING AGENCY CONTACT PREPARED BY APPROVED BY TELEPHONE NO.				
CERTIFICATION OF CUSTOMER OFFICE				
I certify that the items listed herein are correct and proper for payment from and to the appropriation(s) designated.				
(Date)		(Authorized administrative or certifying officer)		
(Telephone)				

PREVIOUS EDITION NOT USABLE

Original - Forward to Customer for Payment

Standard Form 1080 Revised April 1982 Department of the Treasury 1TFRM 2-2500 1080-109		VOUCHER FOR TRANSFERS BETWEEN APPROPRIATIONS AND/OR FUNDS				VOUCHER NO. SCHEDULE NO.	
Department, establishment, bureau, or office receiving funds				BILL NO.			
Department, establishment, bureau, or office charged				PAID BY			
ORDER NO.	DATE OF DELIVERY	ARTICLE OR SERVICES	QUAN-TITY	UNIT PRICE COST	UNIT PRICE PER	AMOUNT DOLLARS & CENTS	
						\$0.00	
						\$0.00	
						\$0.00	
						\$0.00	
						\$0.00	
						\$0.00	
					TOTAL	\$0.00	
Remittance in payment hereof should be sent to-							
ACCOUNTING CLASSIFICATION - Office Receiving Funds							
CERTIFICATE OF OFFICE CHARGED							
I certify that the above articles were received and accepted or the services performed as stated and should be charged to the appropriation (s) and / or fund (s) as indicated below; or that the advance payment requested is approved and should be paid as indicated.							
				(Authorized administrative or certifying officer)			
_____ (Date)				_____ (Title)			
ACCOUNTING CLASSIFICATION - Office Charged							
Paid by Check No.							

NSN 7540-00-634-4230

Previous Editions Are Usable

U.S. GOVERNMENT PRINTING OFFICE: 1985-461-