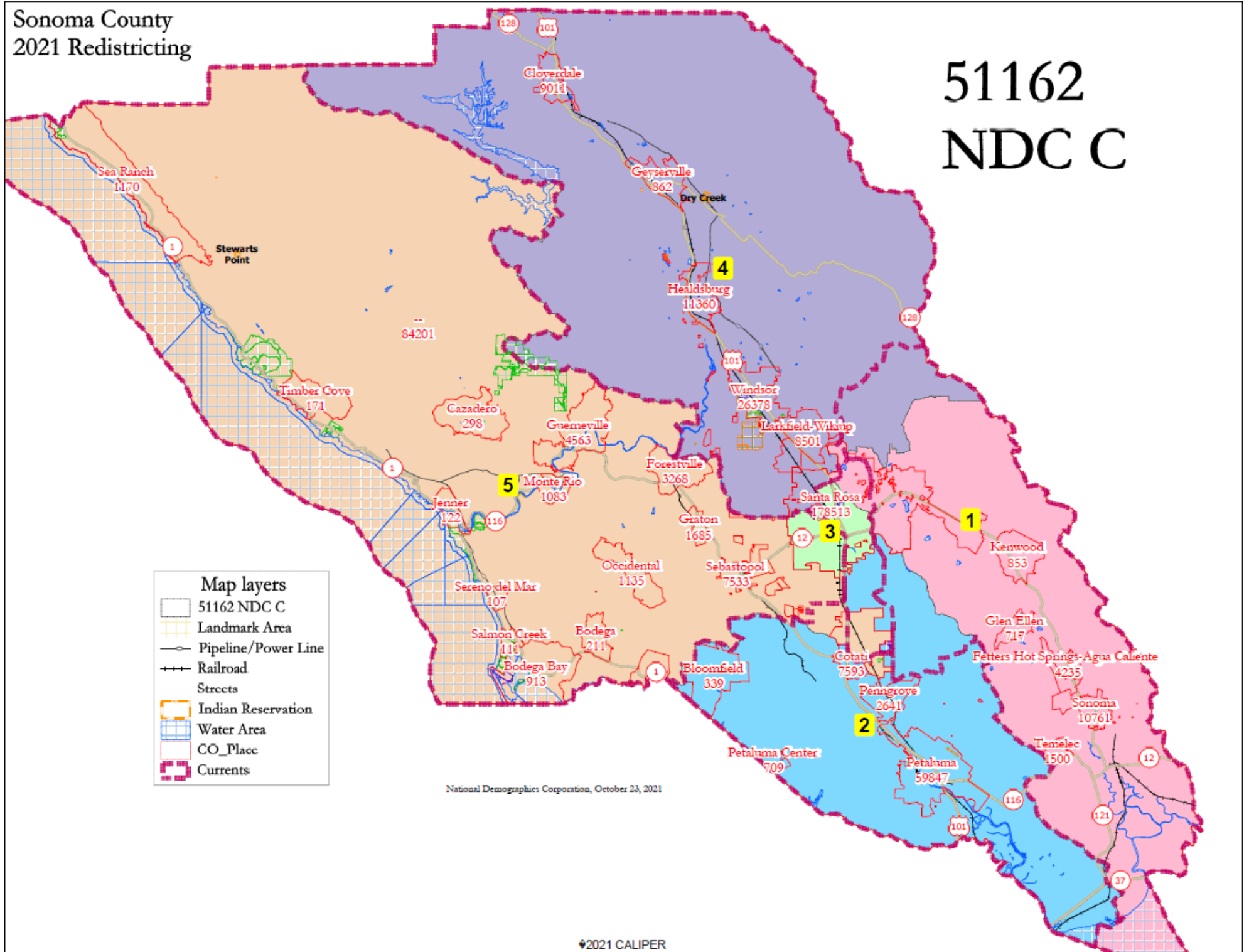


Sonoma County
2021 Redistricting

51162
NDC C



Map layers

- 51162 NDC C
- Landmark Area
- Pipeline/Power Line
- Railroad
- Streets
- Indian Reservation
- Water Area
- CO_Placc
- Currents

National Demographics Corporation, October 23, 2021

51162 NDC C

District		1	2	3	4	5	Total
	Total Pop	99,959	97,772	98,353	95,884	97,742	489,710
	Deviation from ideal	2,017	-170	411	-2,058	-200	4,075
	% Deviation	2.06%	-0.17%	0.42%	-2.10%	-0.20%	4.16%
Total Pop	% Hisp	20.8%	23%	45%	33%	23%	29%
	% NH White	68%	64%	40%	56%	64%	58%
	% NH Black	1%	2%	3%	2%	2%	2%
	% Asian-American	5%	7%	7%	5%	5%	6%
Citizen Voting Age Pop	Total	77,391	71,015	62,072	69,392	76,619	356,490
	% Hisp	11%	13%	25%	21%	14%	16%
	% NH White	82%	80%	61%	71%	79%	75%
	% NH Black	1%	1%	4%	1%	2%	2%
	% Asian/Pac.Isl.	4%	5%	7%	4%	4%	5%
Voter Registration (Nov 2020)	Total	68,911	62,290	47,498	59,880	63,968	302,547
	% Latino est.	10%	12%	27%	19%	12%	15%
	% Spanish-Surnamed	9%	11%	24%	17%	11%	14%
	% Asian-Surnamed	2%	2%	3%	2%	2%	2%
	% Filipino-Surnamed	1%	1%	1%	1%	1%	1%
	% NH White est.	86%	84%	67%	78%	83%	81%
	% NH Black	1%	1%	3%	1%	1%	1%
Voter Turnout (Nov 2020)	Total	62,563	56,171	39,688	53,268	56,879	268,569
	% Latino est.	9%	11%	24%	17%	11%	14%
	% Spanish-Surnamed	8%	10%	22%	16%	11%	13%
	% Asian-Surnamed	2%	2%	3%	2%	2%	2%
	% Filipino-Surnamed	1%	1%	1%	1%	1%	1%
	% NH White est.	87%	85%	70%	79%	84%	82%
	% NH Black	1%	1%	3%	1%	1%	1%
Voter Turnout (Nov 2018)	Total	51,908	44,306	28,448	40,201	44,395	209,258
	% Latino est.	7%	8%	19%	14%	9%	10%
	% Spanish-Surnamed	6%	8%	18%	13%	8%	10%
	% Asian-Surnamed	2%	2%	2%	2%	2%	2%
	% Filipino-Surnamed	1%	1%	1%	1%	1%	1%
	% NH White est.	89%	87%	75%	83%	87%	85%
	% NH Black est.	1%	1%	3%	1%	1%	1%
ACS Pop. Est.	Total	102,081	98,121	100,125	98,973	100,471	499,772
Age	age0-19	19%	24%	25%	24%	20%	22%
	age20-60	45%	51%	58%	51%	52%	51%
	age60plus	36%	25%	17%	26%	29%	26%
Immigration	immigrants	14%	15%	24%	16%	13%	16%
	naturalized	49%	45%	35%	46%	51%	44%
Language spoken at home	english	81%	78%	59%	72%	81%	74%
	spanish	12%	16%	34%	23%	14%	20%
	asian-lang	3%	2%	4%	2%	2%	3%
	other lang	4%	3%	3%	3%	3%	3%
Language Fluency	Speaks Eng. "Less than Very Well"	7%	9%	21%	12%	7%	11%
Education (among those age 25+)	hs-grad	38%	44%	47%	45%	45%	44%
	bachelor	27%	25%	16%	21%	23%	22%
	graduatedegree	19%	14%	8%	11%	14%	13%
Child in Household	child-under18	22%	30%	33%	31%	23%	28%
Pct of Pop. Age 16+	employed	59%	66%	70%	67%	64%	65%
Household Income	income 0-25k	12%	11%	15%	11%	15%	13%
	income 25-50k	15%	15%	21%	15%	18%	17%
	income 50-75k	16%	15%	21%	15%	17%	17%
	income 75-200k	43%	45%	40%	47%	40%	43%
	income 200k-plus	15%	13%	4%	12%	10%	11%
Housing Stats	single family	83%	84%	67%	85%	81%	80%
	multi-family	17%	16%	33%	15%	19%	20%
	rented	34%	35%	53%	34%	38%	39%
	owned	66%	65%	47%	66%	62%	61%

Total population data from the 2020 Decennial Census.

Surname-based Voter Registration and Turnout data from the California Statewide Database.

Latino voter registration and turnout data are Spanish-surname counts adjusted using Census Population Department undercount estimates. NH White and NH Black registration and turnout counts estimated by NDC. Citizen Voting Age Pop., Age, Immigration, and other demographics from the 2015-2019 American Community Survey and Special Tabulation 5-year data.