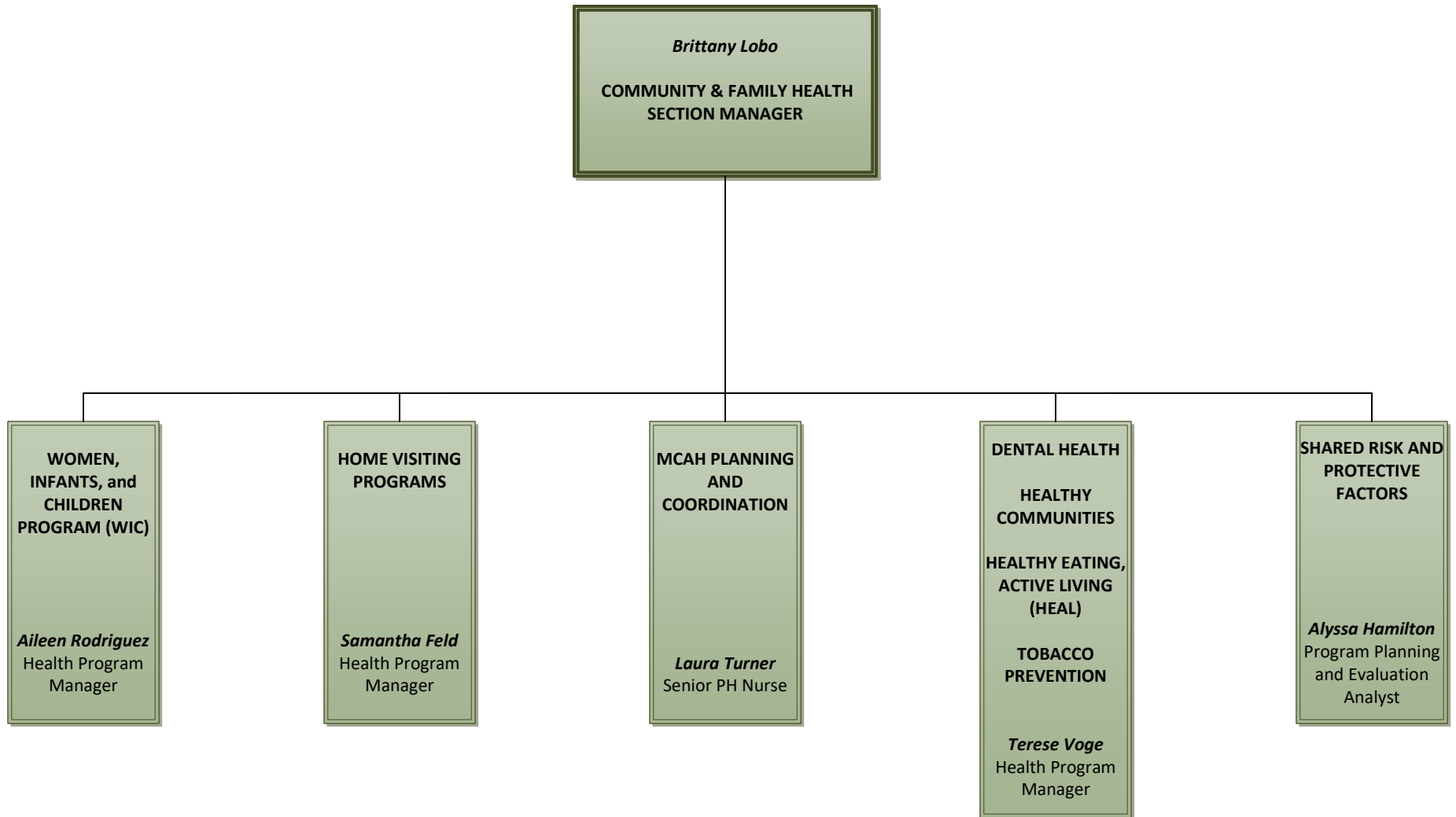




**COMMUNITY  
& FAMILY HEALTH**

Interim Director: Jennifer Solito  
Issue Date: January 7, 2025  
(Organizational Chart)



## Community & Family Health

- Brittany Lobo, Community & Family Health Section Manager
  - Women, Infants, and Children Program (WIC): Aileen Rodriguez, Health Program Manager
  - Home Visiting Programs: Samantha Feld, Health Program Manager
  - MCAH Planning and Coordination: Laura Turner, Senior PH Nurse
  - Dental Health; Healthy Communities; Healthy Eating, Active Living (HEAL); Tobacco Prevention; Terese Voge, Health Program Manager
  - Shared Risk & Protective Factors; Alyssa Hamilton, Program Planning and Evaluation Analyst