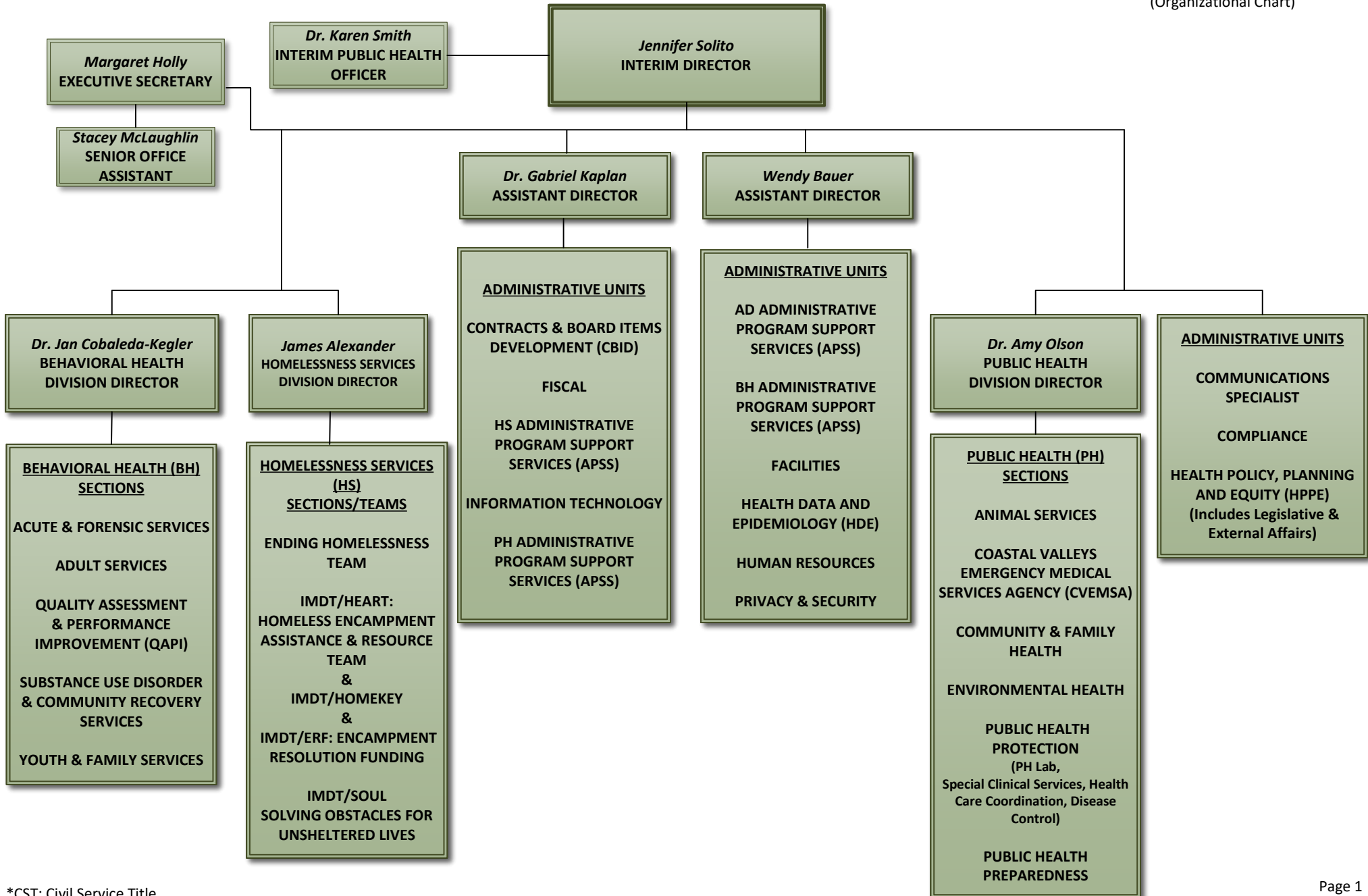




# DEPARTMENT OF HEALTH SERVICES

Interim Director: Jennifer Solito  
Issue Date: January 7, 2025  
(Organizational Chart)



\*CST: Civil Service Title

## Department of Health Services

- Jennifer Solito, Interim Director
  - Dr. Karen Smith, Interim Public Health Officer
  - Margaret Holly, Executive Secretary
    - Stacey McLaughlin, Senior Office Assistant
  - Dr. Jan Cobaleda-Kegler, Behavioral Health Division Director
    - Behavioral Health (BH) Sections
      - Acute & Forensic Services
      - Adult Services
      - Quality Assessment & Performance Improvement (QAPI)
      - Substance Use Disorder & Community Recovery Services
      - Youth & Family Services
  - James Alexander, Homelessness Services Division Director
    - Homelessness Services (HS) Sections/Teams
      - Ending Homelessness Team
      - IMDT/HEART: Homeless Encampment Assistance and Resource Team and IMDT/Homekey & IMDT/ERF: Encampment Resolution Funding
      - IMDT/SOUL Solving Obstacles for Unsheltered Lives
  - Dr. Gabriel Kaplan, Assistant Director
    - Administrative Units
      - Contracts & Board Items Development (CBID)
      - Fiscal
      - HS Administrative Program Support Services (APSS)
      - Information Technology
      - PH Administrative Program Support Services (APSS)
  - Wendy Bauer, Assistant Director
    - Administrative Units
      - AD Administrative Program Support Services (APSS)
      - BH Administrative Program Support Services (APSS)
      - Facilities
      - Health Data & Epidemiology (HDE)
      - Human Resources
      - Privacy & Security
  - Dr. Amy Olson, Public Health Division Director
    - Public Health (PH) Sections
      - Animal Services
      - Coastal Valleys Emergency Medical Services Agency (CVEMSA)
      - Community & Family Health
      - Environmental Health
      - Public Health Protection (PH Lab, Special Clinical Services, Health Care Coordination, Disease Control)
      - Public Health Preparedness
    - Administrative Units
      - Communications Specialist
      - Compliance
      - Health Policy Planning and Equity (HPPE), (Includes Legislative & External Affairs)